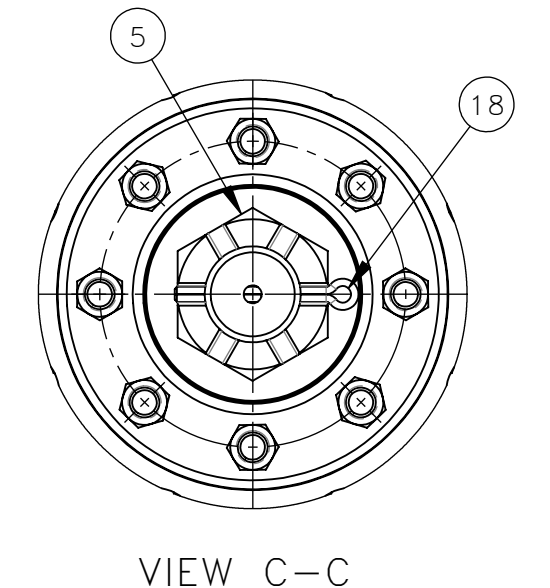


NO.	QTY	DESCRIPTION	PART NO.
1	AR	LOCTITE, 242	008806
2	2	SHT, .094 INSULATOR	321862
3	2	SPACER, AXLE: 3.00 DIA	324506
4	6	SPACER, AXLE: 3.00 DIA	324508
5	2	NUT, HEX SLT: 2-8	394560
6	2	SHT, .06 INSULATOR	395018
7	2	RING, INSULATOR	395019
8	2	HUB, WHEEL: 3.00 AXLE	395020
9	2	WASHER, FLT: 2	395022
10	16	INSERT, SLEEVE INSULATOR	395036
11	2	WHEEL, 16" STEEL	395037
12	1	AXLE, 3.00 DIA	395094
13	1	CLIP, LOCK	395420
14	1	SPACER, WHEEL	395825
15	2	SPACER, WHEEL	396208
16	16	NUT, HEX ES: .62-18	403902
17	4	NUT, HEX ES: .75-10 HVY	407404
18	1	PIN, COTTER: .31 X 3	461243
19	2	BRG, PILLOW BLK: 3 DIA	465630
20	16	STUD, WHEEL: .62-18 X 3	466560
21	2	TAG, YELLOW: SET SCREW TORQUE	478312
22	4	WASHER, FLT: .75	491344
23	4	SCR, HEX: .75-10 X 4	492103
24	1	SPROCKET, #80 28 TOOTH	778723

AXLE HUB DRAWN ON APPROXIMATELY 0.030" TO 0.050" WHEN TIGHTENING NUT TO 500 FT-LBS MIN SEE NOTE ON AXLE BEARING TO WHEEL HUB GAP REQUIREMENTS



NOTE:  
 1) GAGING POINT OVERALL DIMENSION DETERMINED FROM AREMA FIG. 27-2-1 AREMA WHEEL AND FLANGE TRACK GAGE LINE (56 7/16") - 2\*(13/32") DUE TO BOTH WHEELS.  
 \*\*ALL DIMENSIONS BASED ON AREMA SPEC WHEEL\*\*

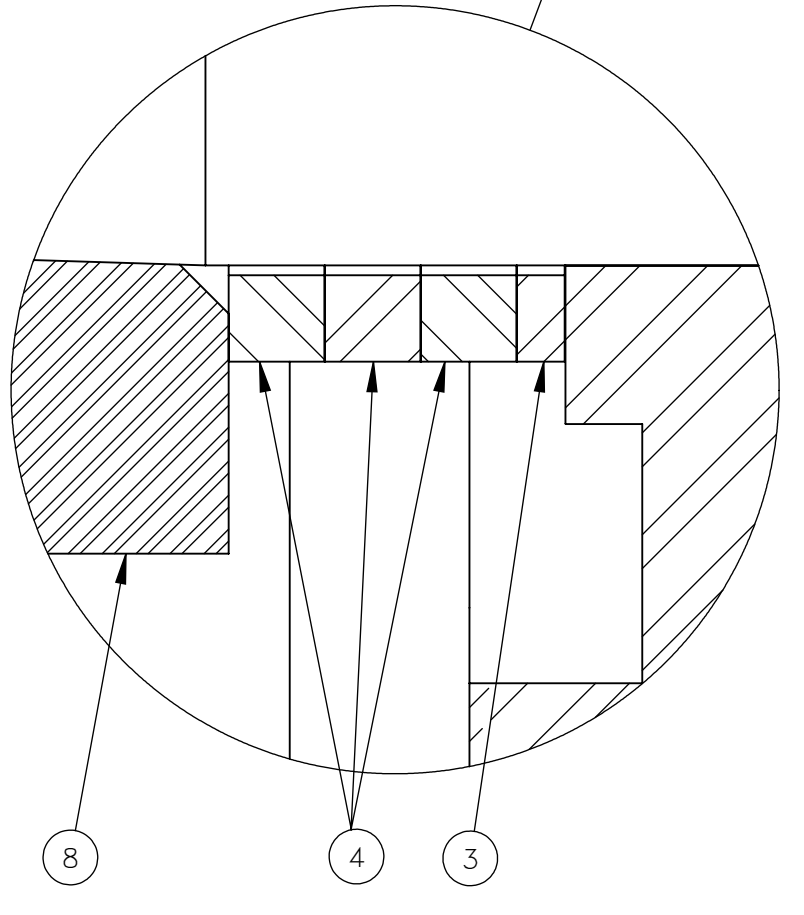
2) PILLOW BLOCK BEARING SET SCREWS TO BE TORQUED TO 52 FT-LBS

AVAILABLE WHEEL SPACERS

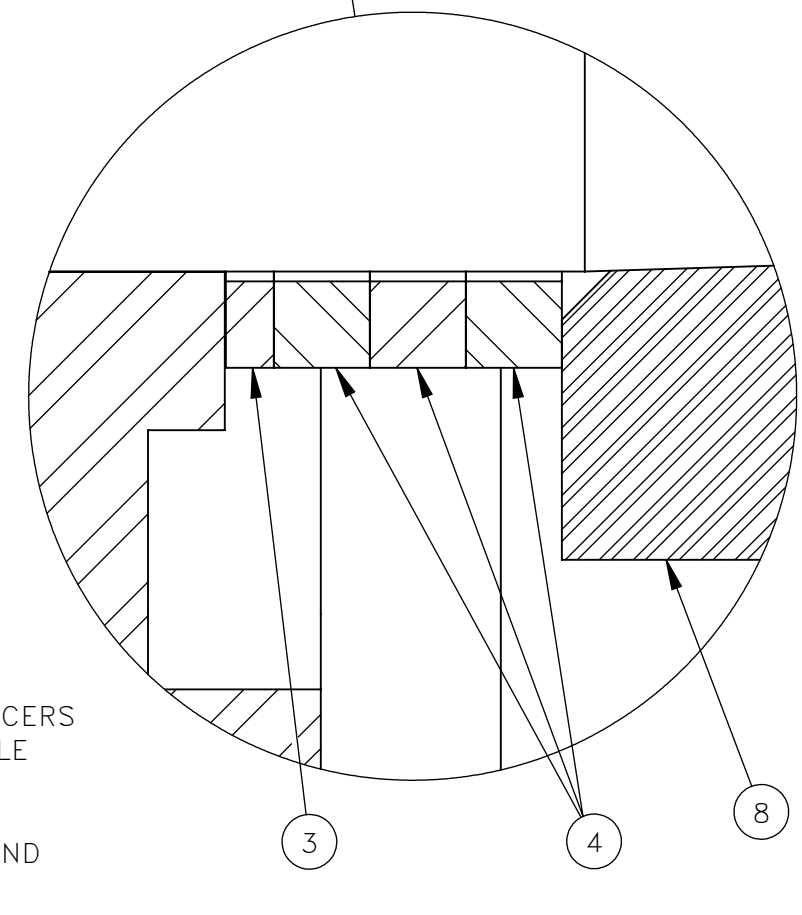
THICKNESS	PART NO.
0.060	315520
0.135	396208
0.250	395825

AVAILABLE AXLE SPACERS

THICKNESS	PART NO.
.250	324508
.190	317046
.125	324506
.060	313062



DETAIL C SCALE 2 : 1



DETAIL D SCALE 2 : 1

ADD OR REMOVE AXLE SPACERS AS NEEDED TO CENTER AXLE GAP TO BE 1/8" OR LESS TOTAL FOR ENTIRE AXLE ASSEMBLY BETWEEN HUB AND AXLE BEARINGS

REV	EN	DESCRIPTION	DATE	DRN
1	3229	NEW RELEASE	6-18	ERL
2	5379	CHG 313062(6-4), 395018(4-2). ADD 321862(2)	11-20	ASM
3	00716	DEL 318823 (2),	6-24	MSO
4	00892	ADD: SET SCREW TORQUE SPEC., 478312(2)	9-24	AWO

DIMENSION TOLERANCES UNLESS OTHERWISE SPECIFIED

LINEAR	.XX=±.03	.XXX=±.010
ANGULAR	X°=±1°	X.X°=±.5°

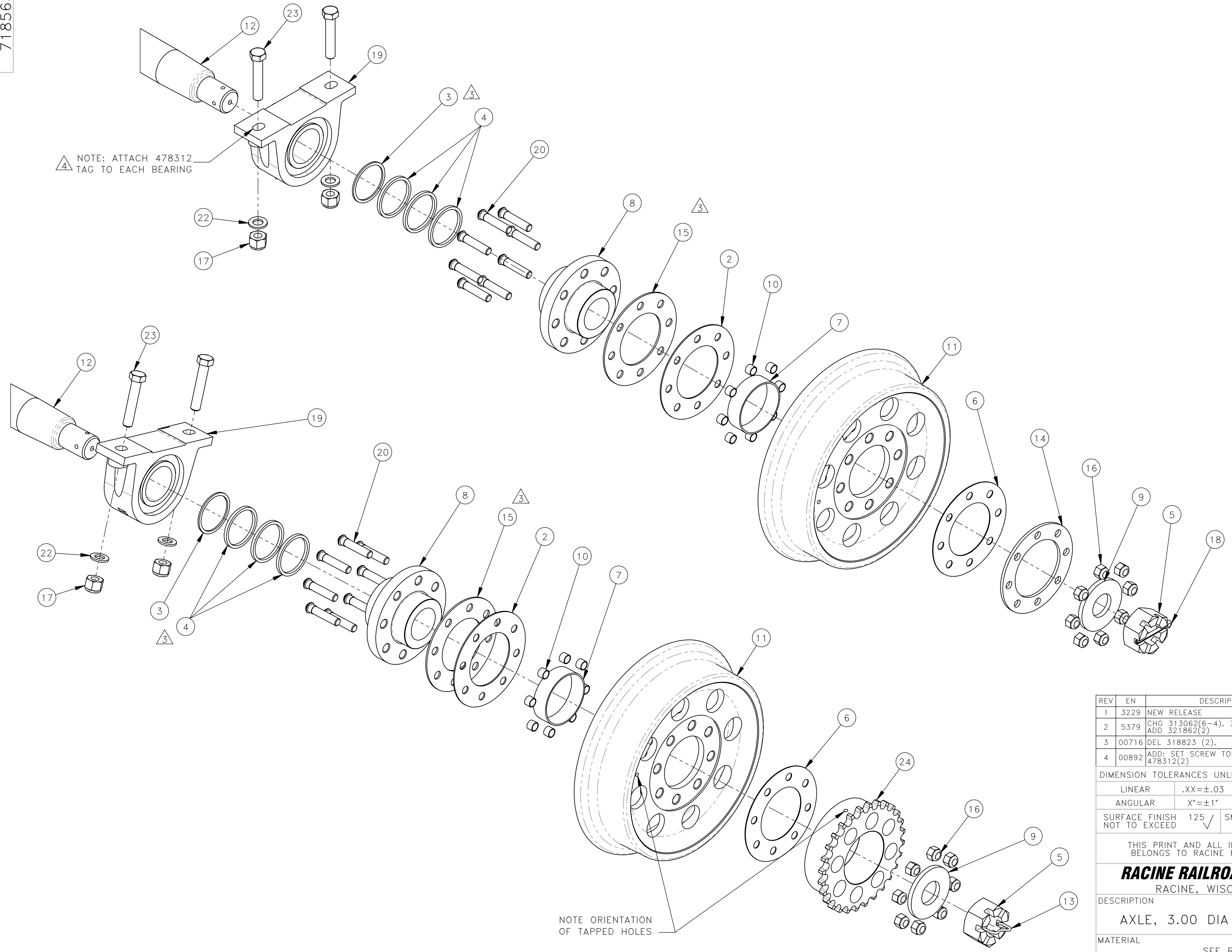
SURFACE FINISH 125 ✓ SMOOTH ALL SHARP EDGES NOT TO EXCEED CLEAN ALL WELDS

THIS PRINT AND ALL INFORMATION WITHIN BELONGS TO RACINE RAILROAD PRODUCTS  
**RACINE RAILROAD PRODUCTS**  
 RACINE, WISCONSIN USA

DESCRIPTION  
 AXLE, 3.00 DIA INS #80 28T

MATERIAL  
 SEE BOM

USED ON 718575	SCALE 1:4	DATE 05-10-18
DRN ERL	CHK APP	JOB NO RD140001
DWG SIZE C	CATALOG A	SHEET 1 OF 2
DWG NO 718563		



NOTE: ATTACH 478312 TAG TO EACH BEARING

NOTE ORIENTATION OF TAPPED HOLES

REV	EN	DESCRIPTION	DATE	DRN
1	3229	NEW RELEASE	6-18	ERL
2	5379	CHG 313062(6-4), 395018(4-2). ADD 321862(2)	11-20	ASM
3	00716	DEL 318823 (2),	6-24	MSO
4	00892	ADD: SET SCREW TORQUE SPEC., 478312(2)	9-24	AWO

DIMENSION TOLERANCES UNLESS OTHERWISE SPECIFIED

LINEAR	.XX=±.03	.XXX=±.010
ANGULAR	X°=±1°	X.X°=±.5°

SURFACE FINISH 125 ✓ SMOOTH ALL SHARP EDGES  
NOT TO EXCEED ✓ CLEAN ALL WELDS

THIS PRINT AND ALL INFORMATION WITHIN BELONGS TO RACINE RAILROAD PRODUCTS

**RACINE RAILROAD PRODUCTS**  
RACINE, WISCONSIN USA

DESCRIPTION				
AXLE, 3.00 DIA INS #80 28T				
MATERIAL				
SEE BOM				
USED ON	718575	SCALE	1:6	DATE
				05-10-18
DRN	CHK	APP	JOB NO	SHEET
ERL			RD140001	2 OF 2
DWG SIZE	CATALOG	DWG NO		
C	A	718563		