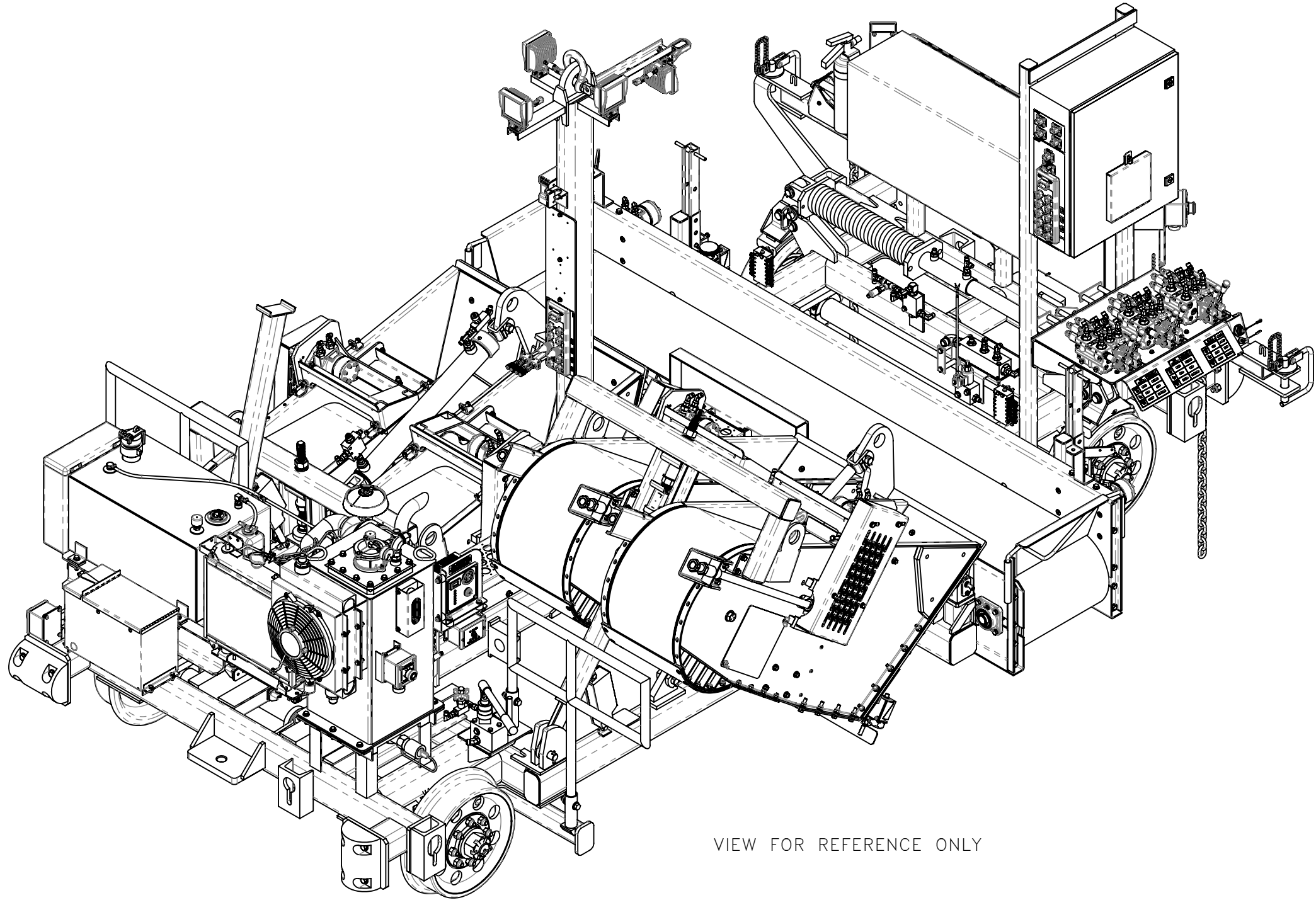
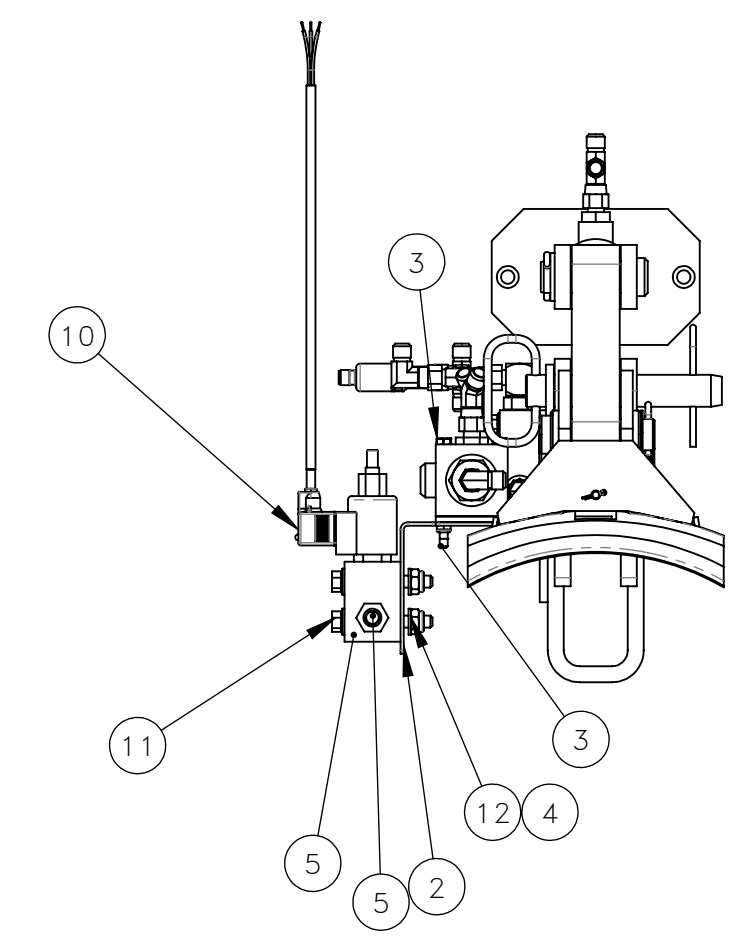
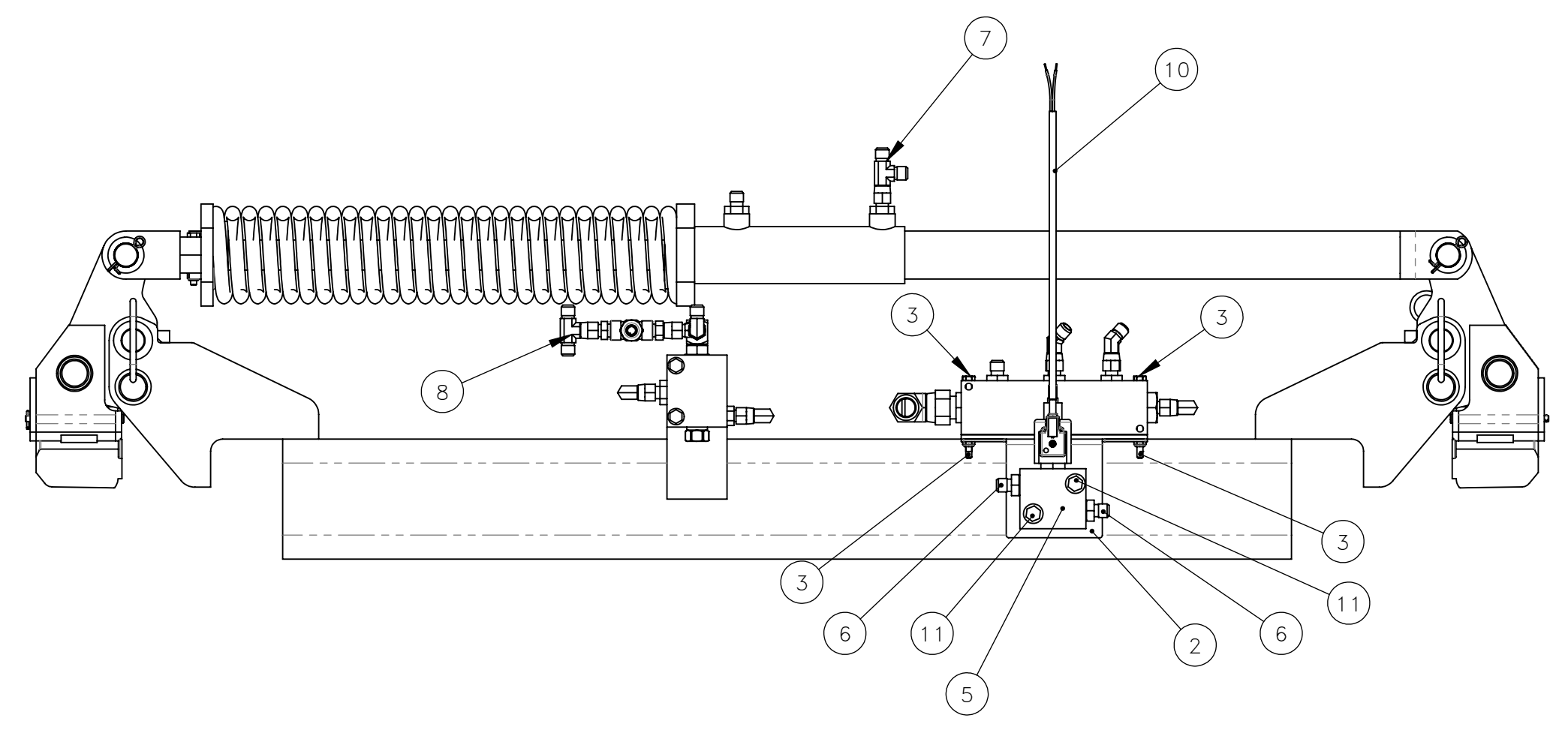
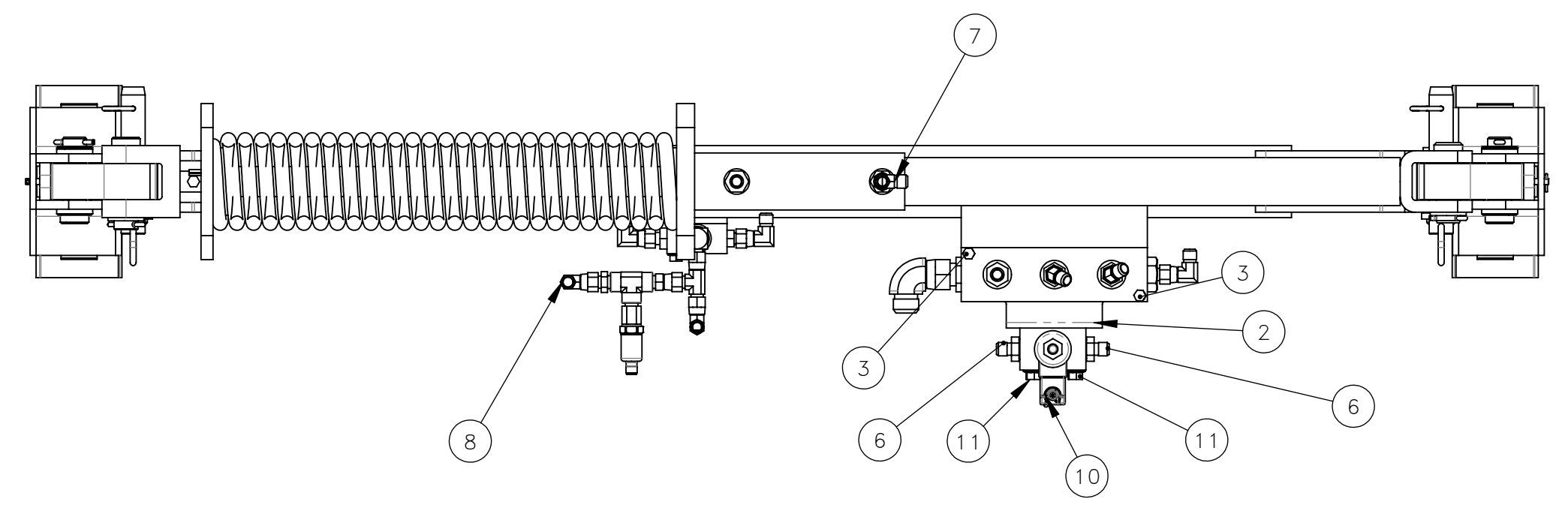
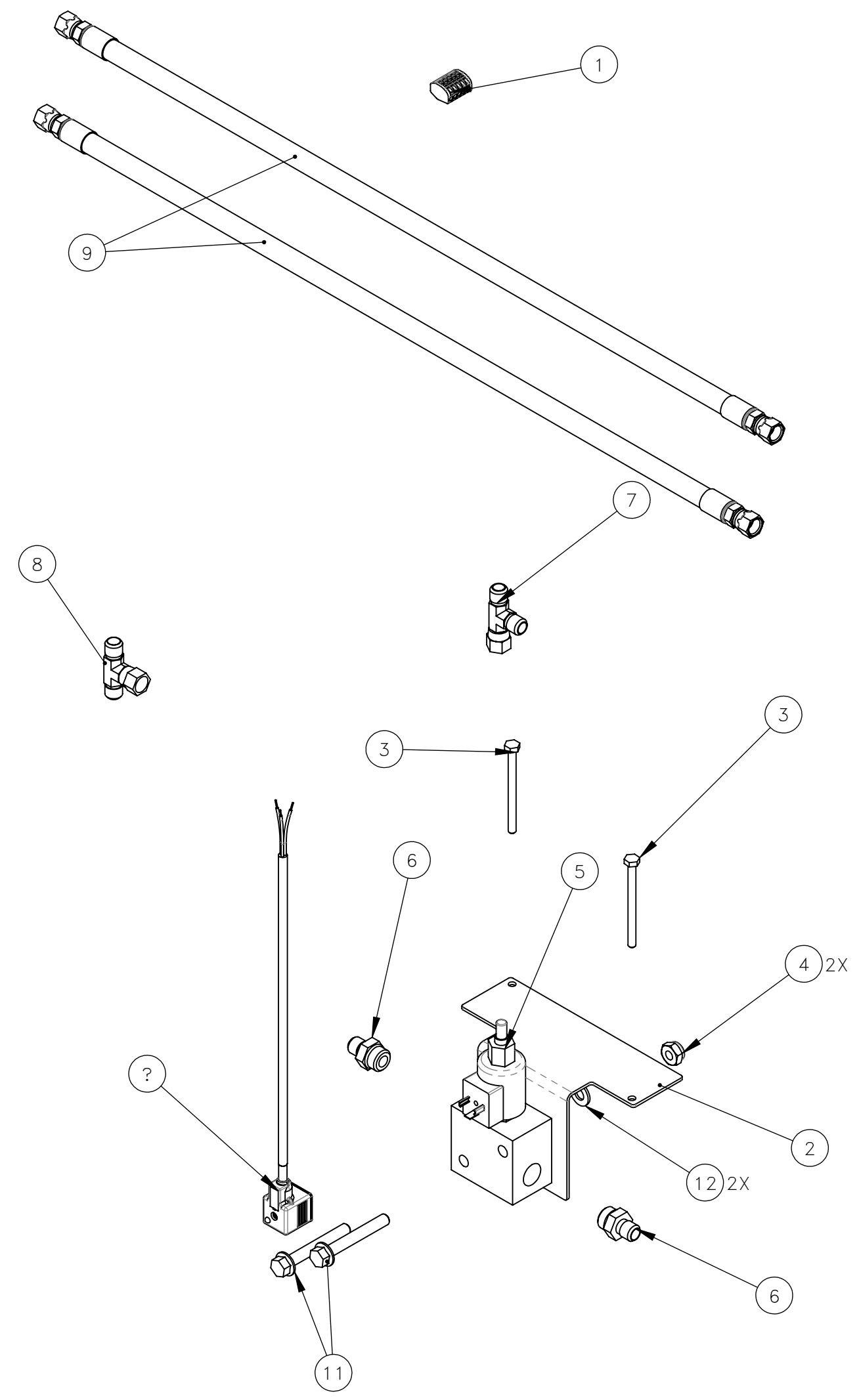


NO.	QTY	DESCRIPTION	PART NO.
1	1	CONN, SPLICE: 28-12 GA 5 WIRE	008947
2	1	BRACKET, VALVE	324903
3	2	SCR, HEX: .25-20 X 3.25	400691
4	2	NUT, HEX ES JAM: .38-16	404274
5	1	VALVE, CONTROL	456264
6	2	ADAPTER, #6 JIC(M) X #8 SAE(M)	459984
7	1	TEE, #6 JIC(M) X #6 JIC(F) X #6 JIC(M)	460158
8	1	TEE, #6 JIC(M) X #6 JIC(M) X #6 JIC(F)	462853
9	2	HOSE ASSY, #6 X 32 CR	465005
10	1	CABLE, DIN 43650 A X BARE 3M	466363
11	2	SCR, HEX FLG: .38-16 X 2.75	491813
12	2	WASHER, FLT: .38	492022
13	1	INSTRUCTIONS, E-STOP BRAKE ENGAGE KIT	800424



REV	EN	DESCRIPTION	DATE	DRN
1	00746	NEW RELEASE	7-24	LHM

DIMENSION TOLERANCES UNLESS OTHERWISE SPECIFIED

LINEAR	.XX=±.03	.XXX=±.010	KERF ALLOW.
ANGULAR	X'=±1°	X.X'=±.5°	

SURFACE FINISH 125 ✓ SMOOTH ALL SHARP EDGES  
NOT TO EXCEED CLEAN ALL WELDS

THIS PRINT AND ALL INFORMATION WITHIN BELONGS TO RACINE RAILROAD PRODUCTS

**RACINE RAILROAD PRODUCTS**  
RACINE, WISCONSIN USA

DESCRIPTION  
E-STOP BRAKE ENGAGE KIT

MATERIAL TYPE  
SEE BOM

USED ON	910197	SCALE	DATE
		1:32	07-11-24

DRN	WEIGHT (LBS)	JOB NO	SHEET
LHM	6336.71		1 OF 1

DWG SIZE	CATALOG	DWG NO
D	K	793209

SW MATERIAL: ASSEMBLY ©\_BRD\_231108