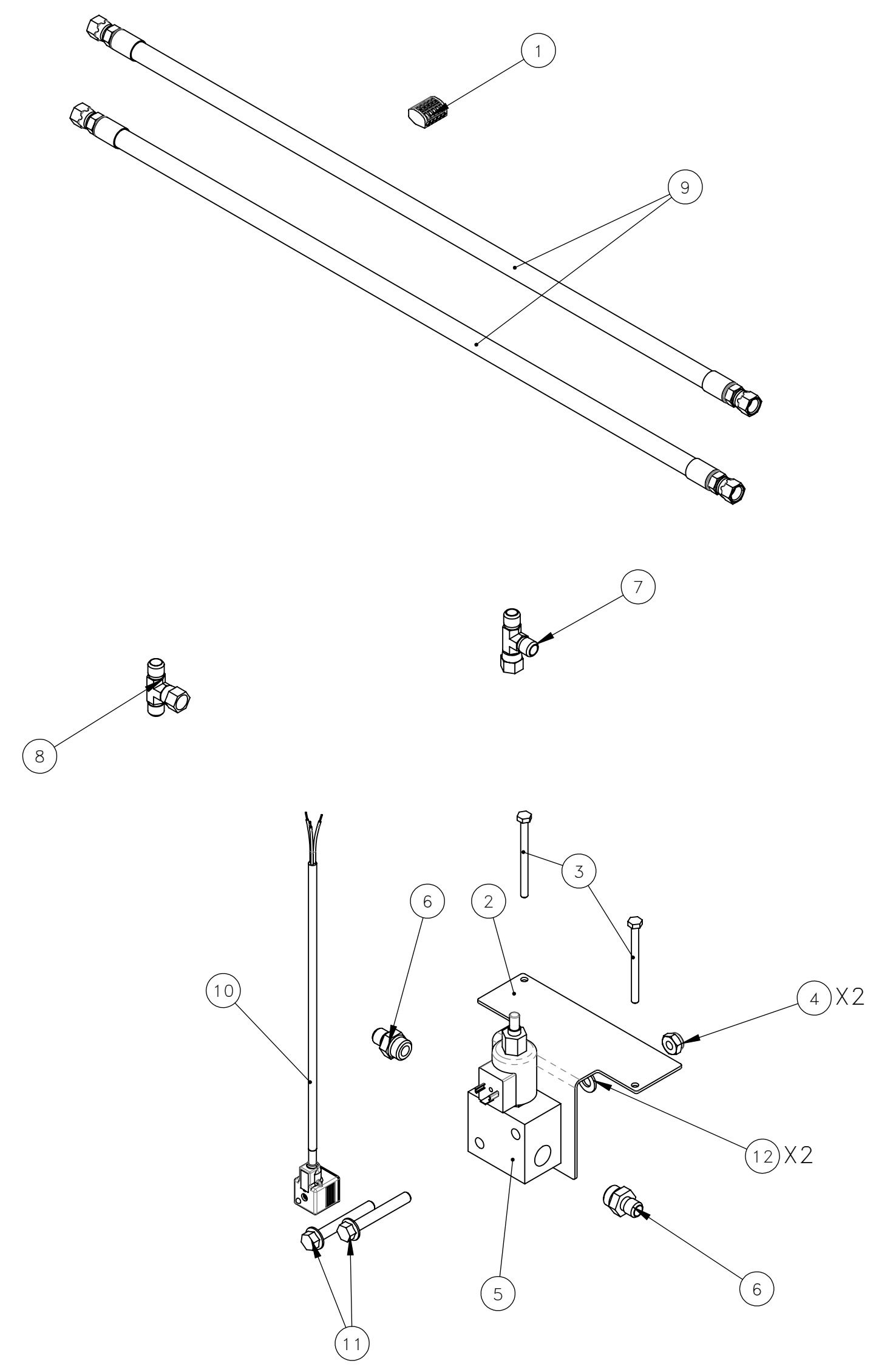


VIEW FOR REFERENCE ONLY

NO.	QTY	DESCRIPTION	PART NO.
1	REF	CONN, SPLICE: 28-12 GA 5 WIRE	008947
2	REF	BRACKET, VALVE	324903
3	REF	SCR, HEX: .25-20 X 3.25	400691
4	REF	NUT, HEX ES JAM: .38-16	404274
5	REF	VALVE, CONTROL	456264
6	REF	ADAPTER, #6 JIC(M) X #8 SAE(M)	459984
7	REF	TEE, #6 JIC(M) X #6 JIC(F) X #6 JIC(M)	460158
8	REF	TEE, #6 JIC(M) X #6 JIC(M) X #6 JIC(F)	462853
9	REF	HOSE ASSY, #6 X 32 CR	465005
10	REF	CABLE, DIN 43650 A X BARE 3M	466363
11	REF	SCR, HEX FLG: .38-16 X 2.75	491813
12	REF	WASHER, FLT: .38	492022



REV	EN	DESCRIPTION	DATE	DRN
1	00746	NEW RELEASE	7-24	LHM

DIMENSION TOLERANCES UNLESS OTHERWISE SPECIFIED

LINEAR	.XX=±.03	.XXX=±.010	KERF ALLOW.
ANGULAR	X'=±1°	X.X'=±.5°	

SURFACE FINISH NOT TO EXCEED 125 ✓ SMOOTH ALL SHARP EDGES CLEAN ALL WELDS

THIS PRINT AND ALL INFORMATION WITHIN BELONGS TO RACINE RAILROAD PRODUCTS

RACINE RAILROAD PRODUCTS
RACINE, WISCONSIN USA

DESCRIPTION
INSTRUCTIONS, E-STOP BRAKE ENGAGE KIT

MATERIAL TYPE
SEE BOM

USED ON	910197	SCALE	DATE
		1:32	07-11-24

DRN	WEIGHT (LBS)	JOB NO	SHEET
LHM	6336.68	RD180001	1 OF 4

DWG SIZE	CATALOG	DWG NO
D	K	800424

SW MATERIAL: ASSEMBLY ©_BRD_231108

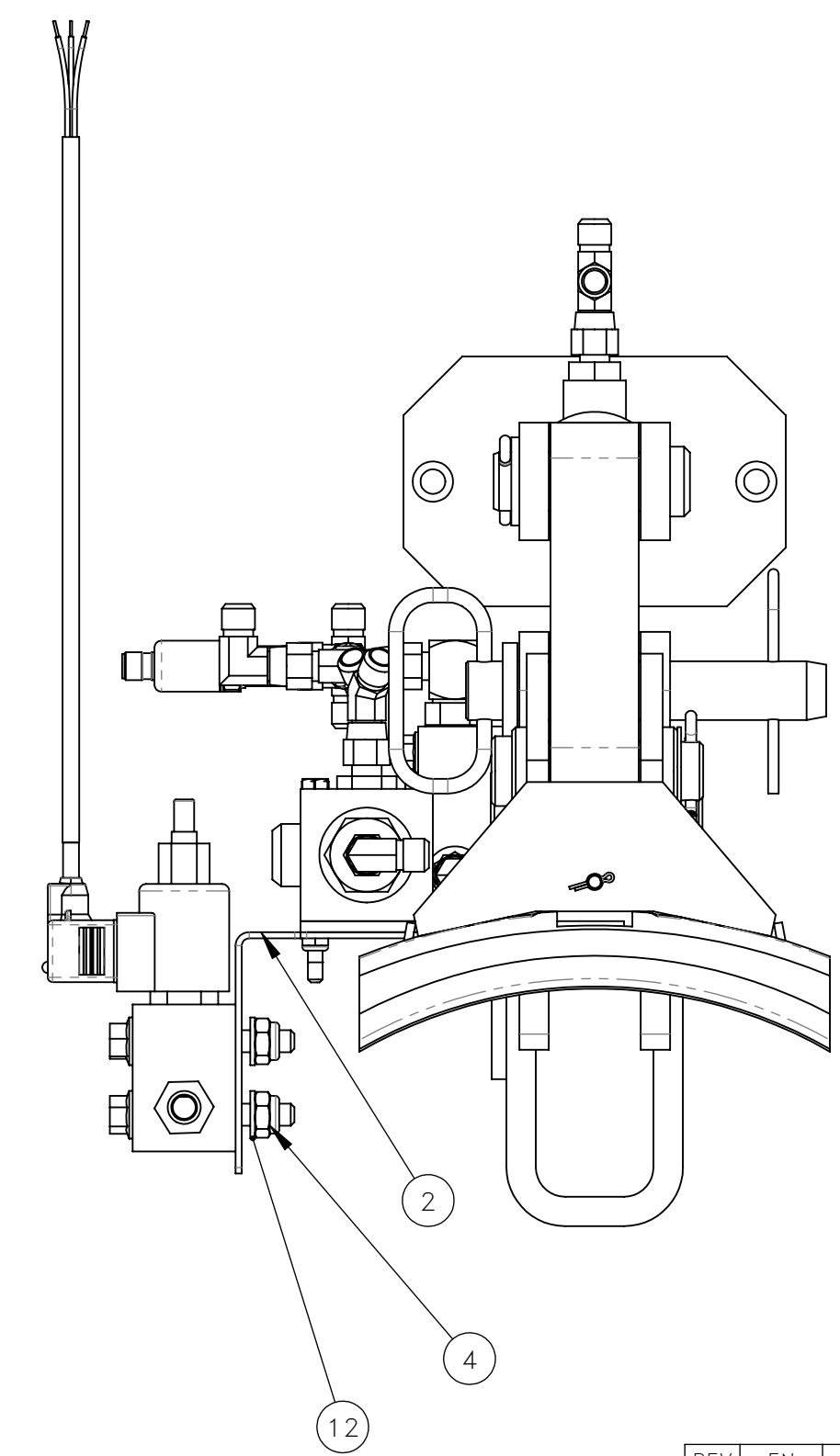
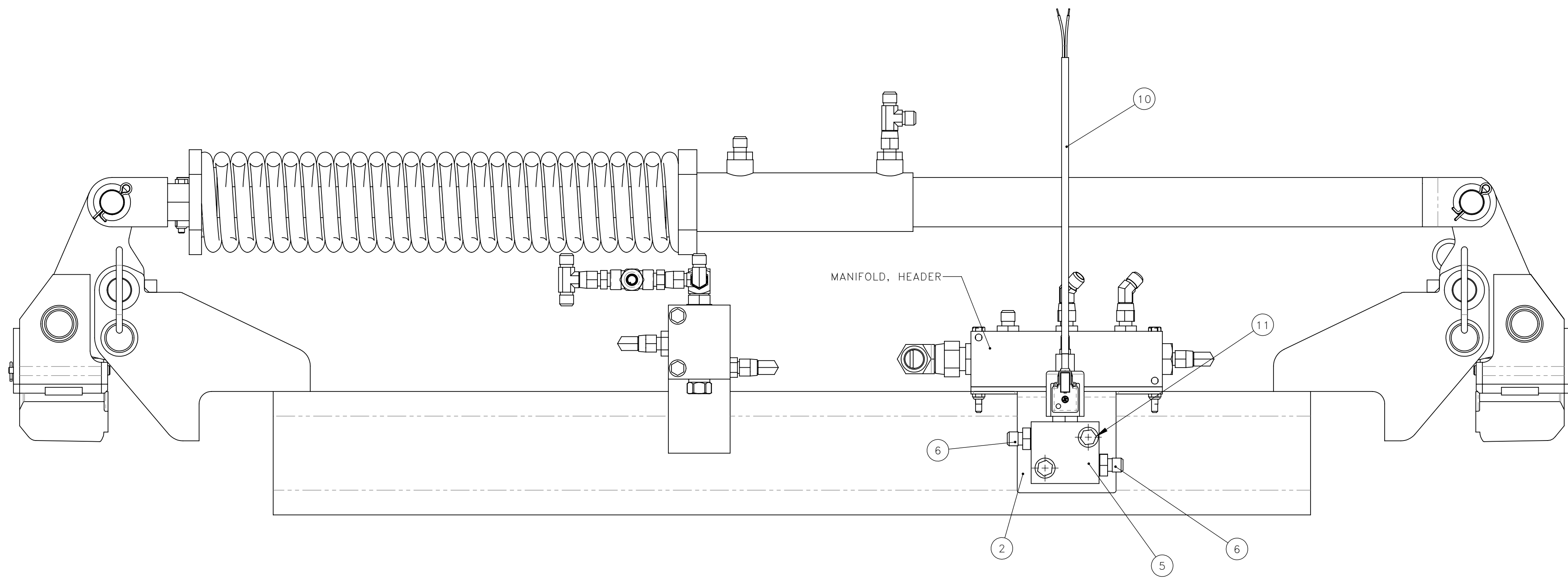
ENSURE BRAKE LINES ARE DRAINED AND ALL ELECTRICAL IS POWERED DOWN BEFORE PROCEEDING WITH KIT INSTALLATION

STEP 1: LOCATE AND AFFIX ITEM 2 (BRACKET, VALVE) UNDERNEATH FLAT PLATE THAT HOLDS MANIFOLD, HEADER
USE ITEM 3 (SCR, HEX) TO REPLACE INITIAL MOUNTING BOLTS OF MANIFOLD, HEADER (PN: 491848)

STEP 2: ATTACH X2 ITEM 6 (ADAPTOR) TO ITEM 5 (VALVE, CONTROL)

STEP 3: ATTACH ITEM 5 (VALVE, CONTROL) TO ITEM 2 (BRACKET, VALVE) USING ITEM 4 (NUT), ITEM 11 (BOLT), AND ITEM 12 (WASHER).

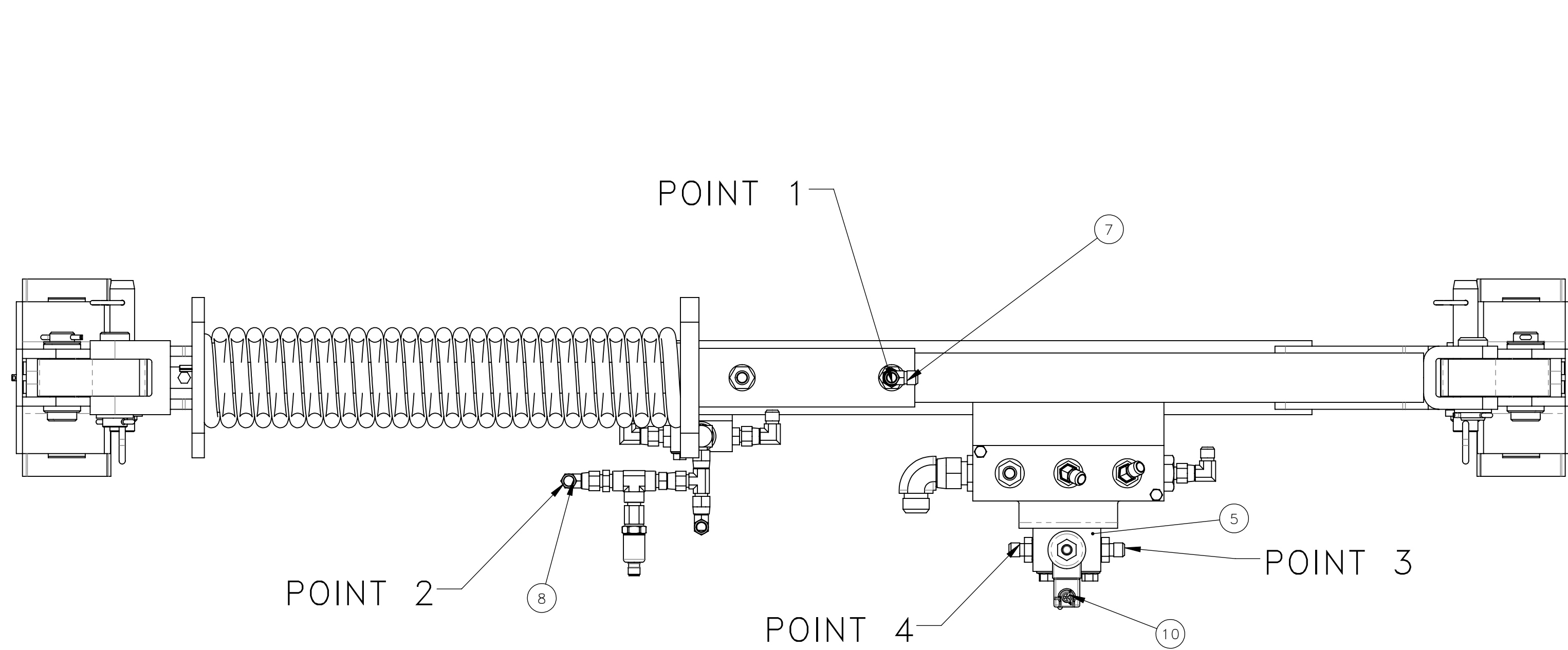
ITEM 10 (CABLE) WILL BE ADDED AT A LATER PAGE



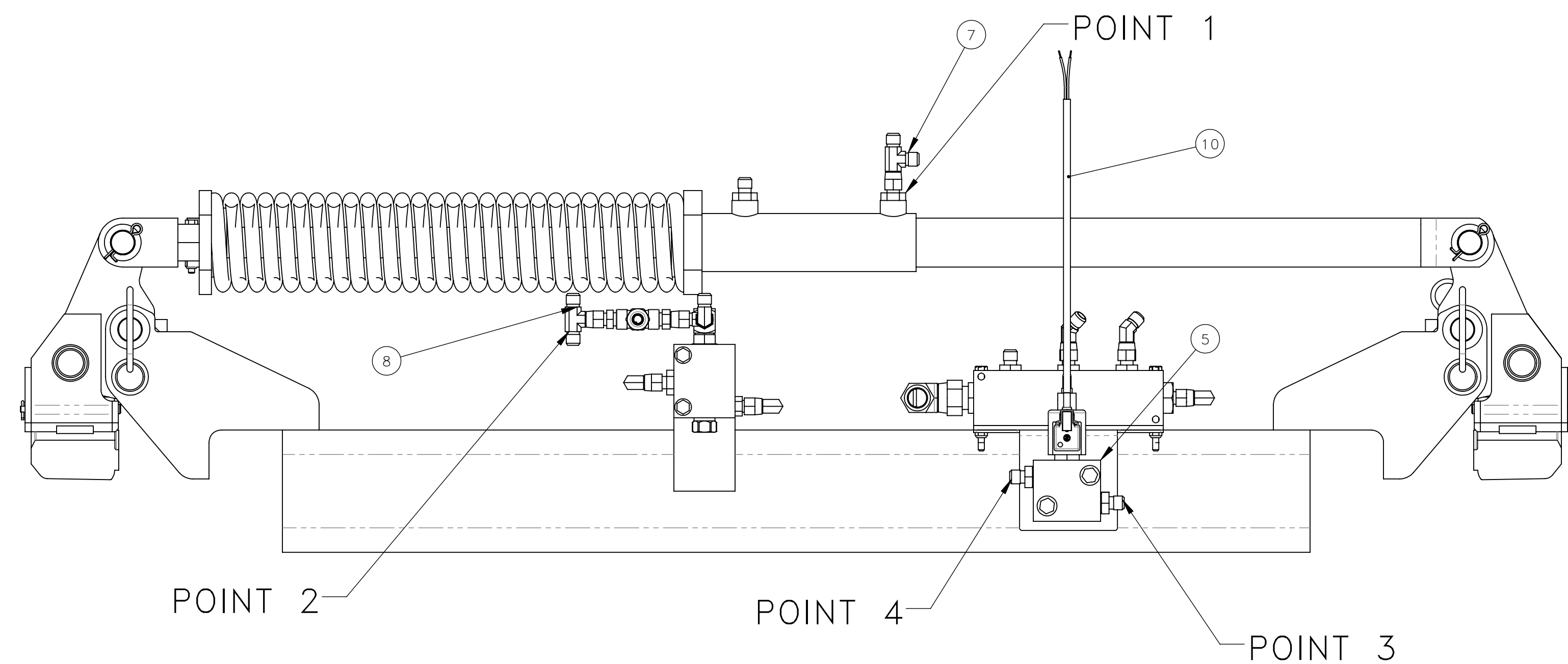
REV	EN	DESCRIPTION	DATE	DRN
1	00746	NEW RELEASE	7-24	LHM
DIMENSION TOLERANCES UNLESS OTHERWISE SPECIFIED				
LINEAR	.XX=±.03	.XXX=±.010	KERF ALLOW.	
ANGULAR	X°=±1°	X.X°=±.5°		
SURFACE FINISH		125	SMOOTH ALL SHARP EDGES	
NOT TO EXCEED			CLEAN ALL WELDS	
THIS PRINT AND ALL INFORMATION WITHIN BELONGS TO RACINE RAILROAD PRODUCTS				
RACINE RAILROAD PRODUCTS				
RACINE, WISCONSIN USA				
DESCRIPTION				
INSTRUCTIONS, E-STOP BRAKE ENGAGE KIT				
MATERIAL TYPE				
SEE BOM				
USED ON	910197	SCALE	DATE	
		1:32	07-11-24	
DRN	WEIGHT (LBS)	JOB NO	SHEET	
LHM	6336.68	RD180001	2 OF 4	
DWG SIZE	CATALOG	DWG NO		
D	K	800424		

ENSURE BRAKE LINES ARE DRAINED AND ALL ELECTRICAL IS POWERED DOWN BEFORE PROCEEDING WITH KIT INSTALLATION

- STEP 1: ATTACH ITEM 7 (TEE) TO POINT 1
 ATTACH ITEM 8 (TEE) TO POINT 2
- STEP 2: ATTACH ITEM 9 (HOSE) TO POINT 1 AND POINT 3
 ATTACH ITEM 9 (HOSE) TO POINT 2 AND POINT 4



TOP VIEW

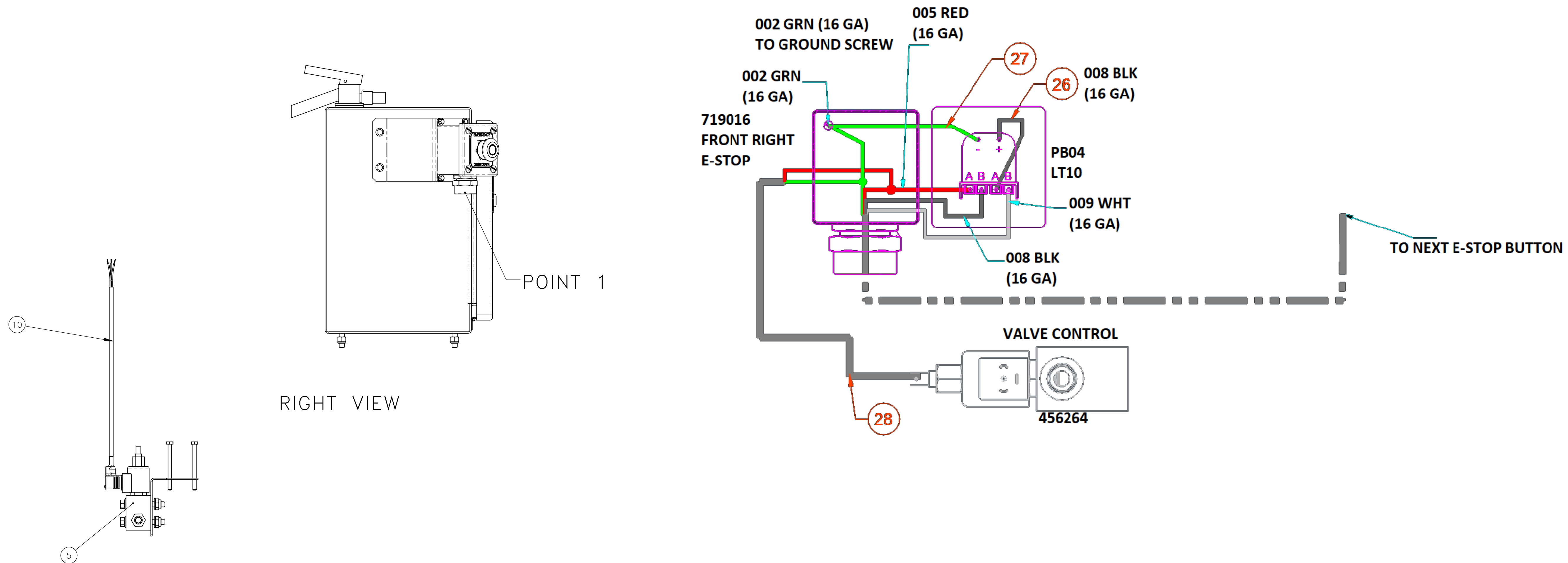


FRONT VIEW

REV	EN	DESCRIPTION	DATE	DRN
1	00746	NEW RELEASE	7-24	LHM
DIMENSION TOLERANCES UNLESS OTHERWISE SPECIFIED				
LINEAR	.XX=±.03	.XXX=±.010	KERF ALLOW.	
ANGULAR	X'=±1°	X.X'=±.5°		
SURFACE FINISH		125	SMOOTH ALL SHARP EDGES	
NOT TO EXCEED			CLEAN ALL WELDS	
THIS PRINT AND ALL INFORMATION WITHIN BELONGS TO RACINE RAILROAD PRODUCTS				
RACINE RAILROAD PRODUCTS				
RACINE, WISCONSIN USA				
DESCRIPTION				
INSTRUCTIONS, E-STOP BRAKE ENGAGE KIT				
MATERIAL TYPE				
SEE BOM				
USED ON	910197	SCALE	DATE	
		1:32	07-11-24	
DRN	WEIGHT (LBS)	JOB NO	SHEET	
LHM	6336.68	RD180001	3 OF 4	
DWG SIZE	CATALOG	DWG NO		
D	K			800424

ENSURE BRAKE LINES ARE DRAINED AND ALL ELECTRICAL IS POWERED DOWN BEFORE PROCEEDING WITH KIT INSTALLATION

- STEP 1: CONNECT ITEM 10 (CABLE) TO INTERALS OF FRONT RIGHT E-STOP BUTTON.
 OPEN E-STOP BUTTON BOX AND PULL ELECTRICALS OUT FAR ENOUGH TO WORK ON
 REMOVE CORE GRIP ON BOTTOM OF E STOP TO PASS WIRES THROUGH
 TAKE ITEM 10 (CABLE) WIRE AND DRAW UP THROUGH HOLE IN BOTTOM OF E-STOP BUTTON BOX POINT 1
- STEP 2: USE ITEM 1 TO CONNECT GROUND WIRES AND ONE OF THE WIRES FROM ITEM 2 (USE FERREL FOR ENDS)
- STEP 3: USE FERREL AND CONNECT OTHER WIRE WITH WHITE WIRE (009) ON B CIRCUIT
- STEP 4: WHEN WIRING IS DONE, CONNECT ITEM 10 (CABLE) TO ITEM 5 (VALVE, CONTROL)



REV	EN	DESCRIPTION	DATE	DRN
1	00746	NEW RELEASE	7-24	LHM
DIMENSION TOLERANCES UNLESS OTHERWISE SPECIFIED				
LINEAR	.XX=±.03	.XXX=±.010	KERF ALLOW.	
ANGULAR	X'=±1°	X.X'=±.5°		
SURFACE FINISH		125	SMOOTH ALL SHARP EDGES	
NOT TO EXCEED		CLEAN ALL WELDS		
THIS PRINT AND ALL INFORMATION WITHIN BELONGS TO RACINE RAILROAD PRODUCTS				
RACINE RAILROAD PRODUCTS				
RACINE, WISCONSIN USA				
DESCRIPTION				
INSTRUCTIONS, E-STOP BRAKE ENGAGE KIT				
MATERIAL TYPE				
SEE BOM				
USED ON	910197	SCALE	DATE	
		1:32	07-11-24	
DRN	WEIGHT (LBS)	JOB NO	SHEET	
LHM	6336.68	RD180001	4 OF 4	
DWG SIZE	CATALOG	DWG NO		
D	K		800424	