

Service Bulletin

Maintenance of Way Equipment

Date: 08/01/2024

RRP Service Bulletin No: RRP SB393

Title: Torque Set Screws on Axle Bearing

Rating:

ALERT
(Potential Problem)

INFORMATION
(Action Is Optional)

DIRECTIVE
(Action Is Required)

PRODUCT IMPROVEMENT
(Enhance Product)

Product Series: ALL

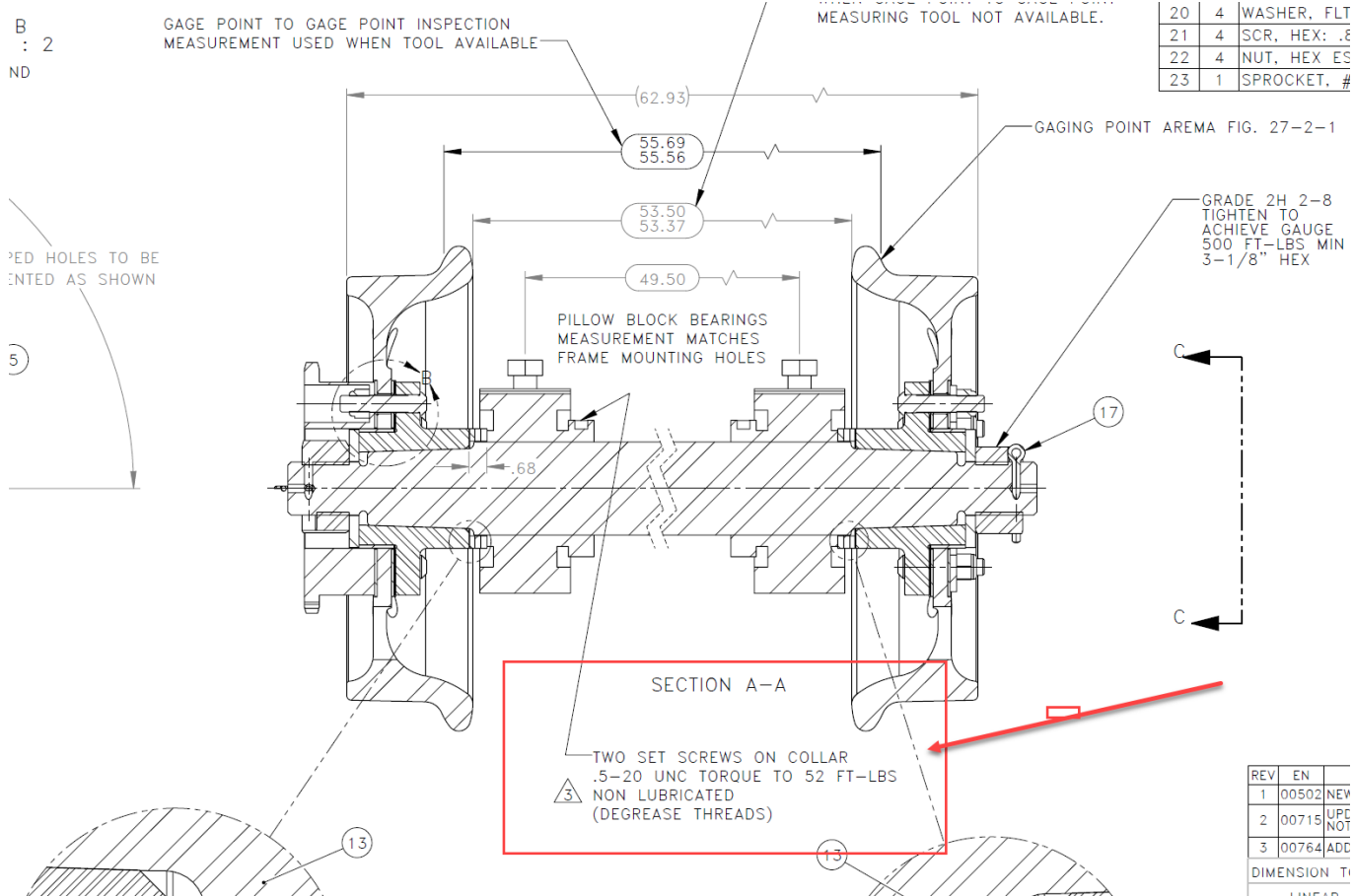
Advance Anchormatic [AAA]	AM3 Anchor Applicator [AM3]
Advanced Tie Plate Inserter [ATPI]	Dual Anchor Spreader [DAS]
Dual Anchor Adjuster [DAA]	Dual Clip Applicator [DCA]
Dual Anchor Adjuster / Spreader [DASP]	OTM Reclaimer
Nipper Clipper [NC] & Safelok Clip Remover [SAR]	Towed Reclaimer [TOWD]
Tie Plate Inserter [TPI]	

Summary: Set screws on axle may be loose. *Failure to torque set screws can result in both axle and bearing failure.*

Resolution: Check axle bearing set screws on **all** machines in operation. Torque both .5-20 UNC set screws on each bearing to **52 ft-lbs.**

On new axles installed onto existing machines, torque both .5-20 UNC set screws on each bearing to **52 ft-lbs.**

Contact: If you have any questions or we can be of any service, please contact the Racine Railroad Products Service Department at (262)-637-9681 or fieldservice@racinerailroad.com.



IMPORTANT
TORQUE BOTH .5-20 UNC SET SCREWS ON EACH BEARING TO 52 FT-LBS AFTER INSTALLATION ON AXLE ONTO MACHINE.