

Service Bulletin

Maintenance of Way Equipment

Date: 4.24.2026

RRP Service Bulletin No: RRP SB400

Title: Anchormatic 3 (AM3) Swing Arm Latch

Rating:



ALERT
(Potential Problem)



INFORMATION
(Action Is Optional)



DIRECTIVE
(Action Is Required)



PRODUCT IMPROVEMENT
(Enhance Product)

Product Series: Anchormatic 3 (AM3)

Serial No:

AM3-001	UPRR	AAA-2407
AM3-002	UPRR	AAA-2401
AM3-003	UPRR	AAA-2402
AM3-004	UPRR	AAA-2003

AM3-005	UPRR	AAA-2404
AM3-006	UPRR	AAA-2405
AM3-007	UPRR	AAA-2406

Summary:

The updated latching provides improved reliability to lock in the swing arm during travel.

Action: Use RRP# 793223 Swing Arm Latch Kit to update the machine. Follow Instructions 800434 on how to install the Swing Arm Latch Kit

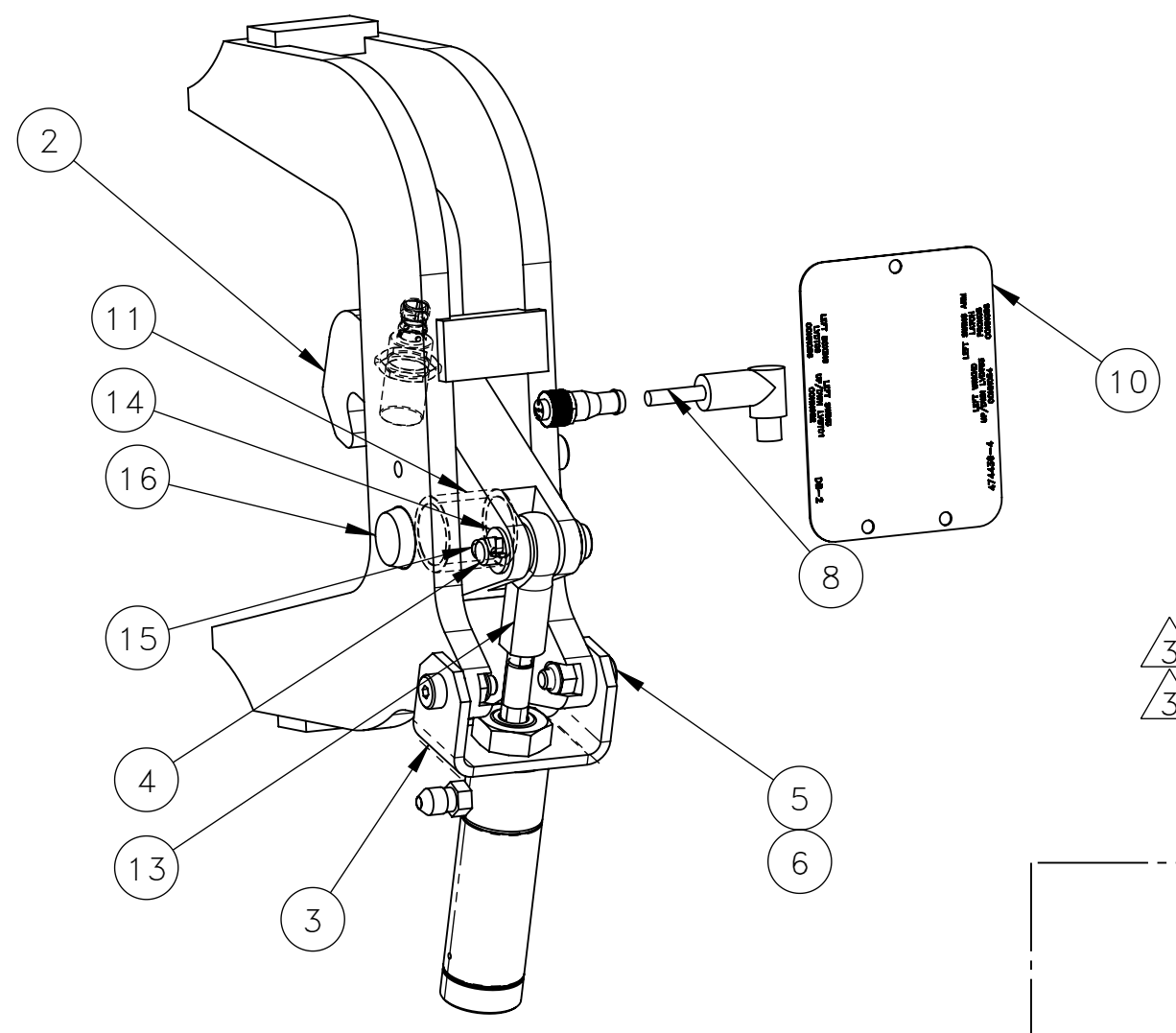
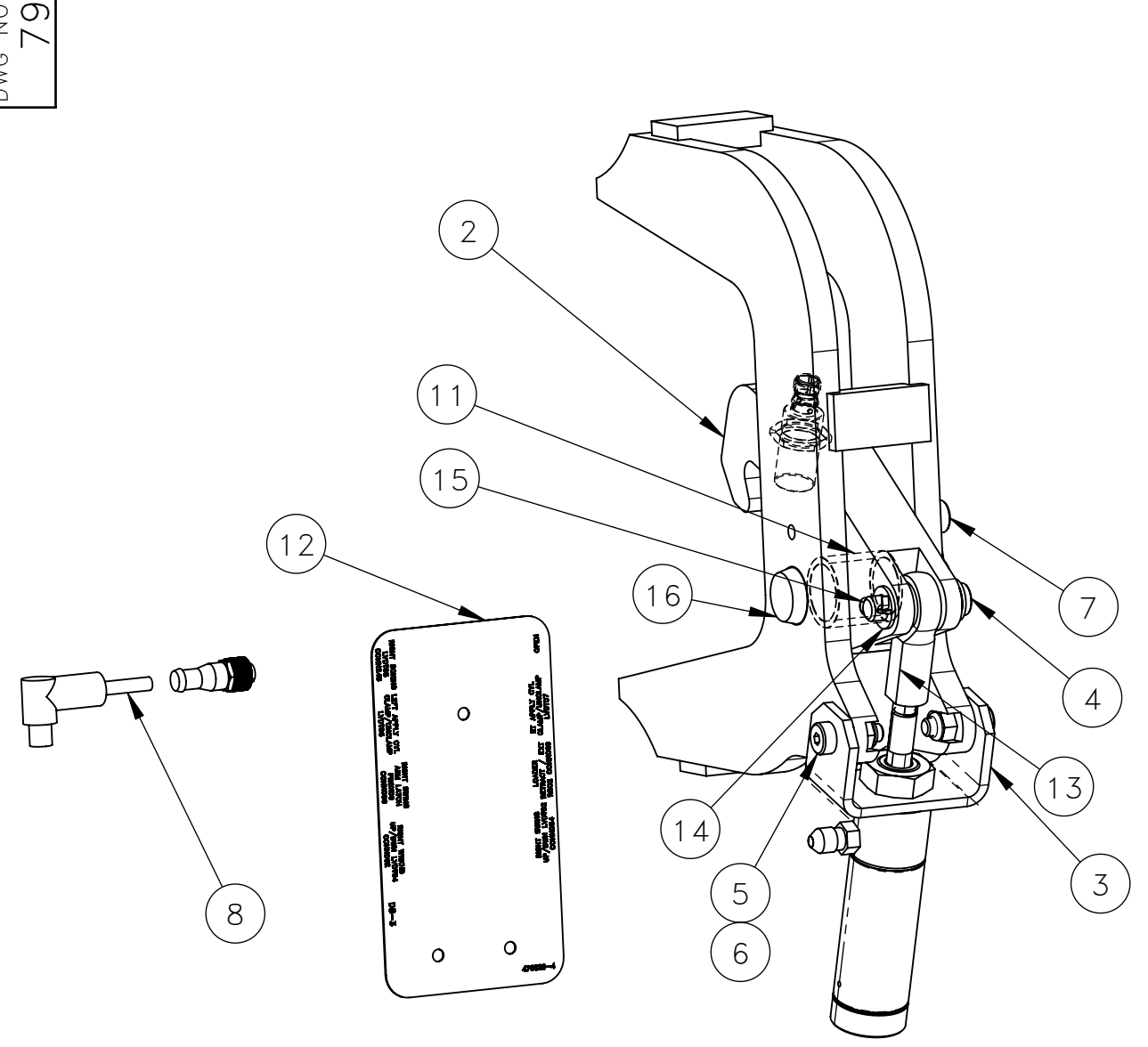
Note: The new lock assemblies will need to be welded on during the field.

Call RRP Service to schedule installation assistance in the field.

Swing Arm Latch Parts List

NO.	QTY	DESCRIPTION	PART NO.
1	2	LATCH, APPLY ARM	325834
2	2	LATCH	325835
3	2	SHEET, CYLINDER MOUNT	325836
4	2	PIN, CLEVIS: .44 X 1.75	382798
5	4	SCR, SOC SHLD: .38 X .5	408851
6	4	NUT, HEX ES: .31-18	450578
7	2	SCR, SOC SHLD: .38 X .38	453853
8	2	CABLE, MICRO: 5 PIN(M) 90° X 5 PIN(F) 5 M	468957
9	2	SENSOR, PROXIMITY	473376
10	1	PLACARD, DB-2	474439
11	2	BRG, SLV: 1 ID OILITE	475882
12	1	PLACARD, DB-3	476829
13	2	ROD END, .44-20 INTERNAL	478600
14	6	WASHER, FLT: .44	491276
15	2	PIN, COTTER: .12 X .75	491347
16	2	PIN, TEARDROP: 1 X 2.62	781437
17	2	MOUNT, LATCH	782870
18	1	INSTRUCTIONS SWING ARM LATCH INSTALLATION	800434
19	1	MANUAL, ANCHORMATIC 3	931589-M
20	1	MANUAL, PARTS	931589-P

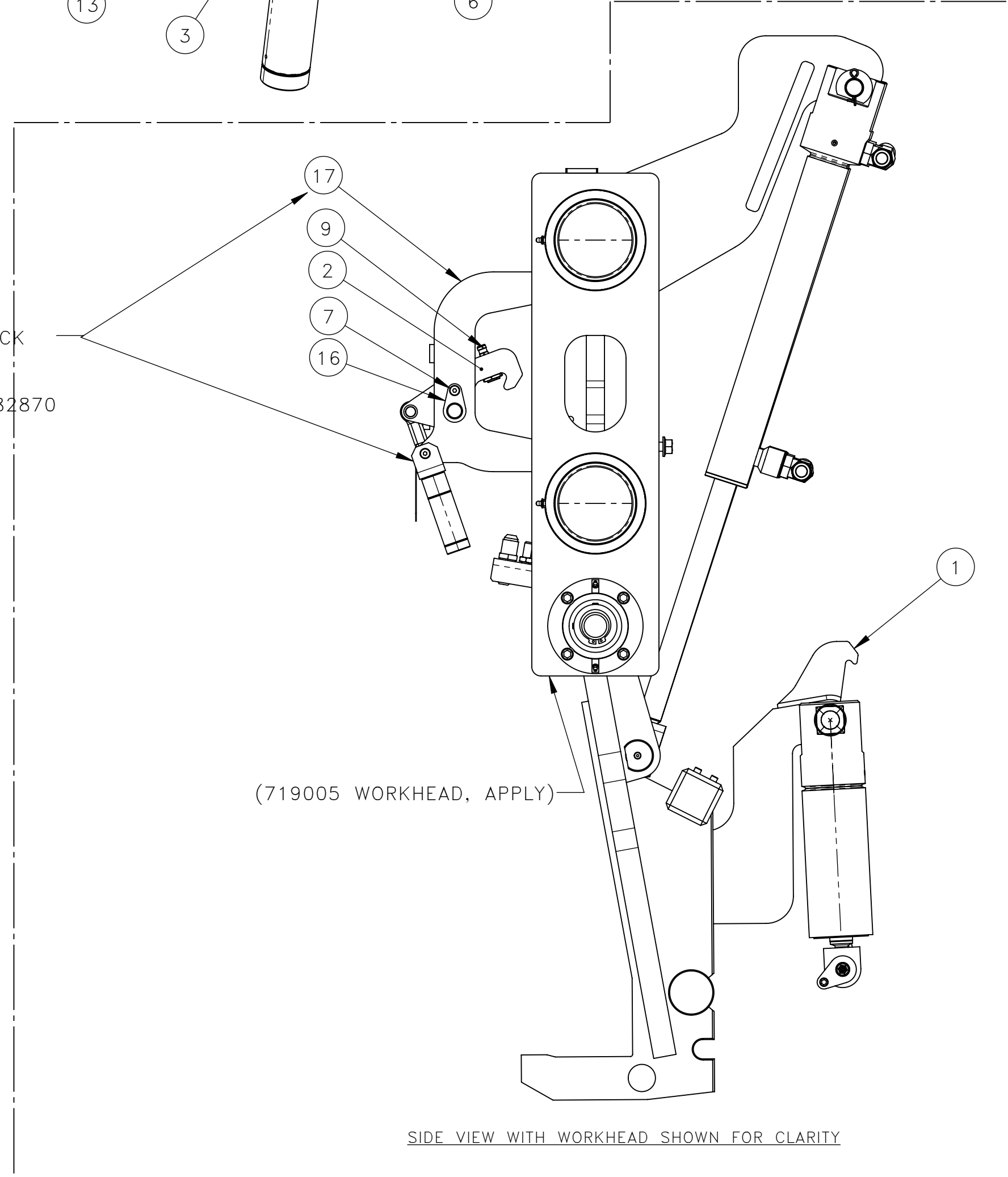
Note: 931589-M and 931589-P added to the parts list.



NO.	QTY	DESCRIPTION	PART NO.
1	2	LATCH, APPLY ARM	325834
2	2	LATCH	325835
3	2	SHEET, CYLINDER MOUNT	325836
4	2	PIN, CLEVIS: .44 X 1.75	382798
5	4	SCR, SOC SHLD: .38 X .5	408851
6	4	NUT, HEX ES: .31-18	450578
7	2	SCR, SOC SHLD: .38 X .38	453853
8	2	CABLE, MICRO: 5 PIN(M) 90° X 5 PIN(F) 5 M	468957
9	2	SENSOR, PROXIMITY	473376
10	1	PLACARD, DB-2	474439
11	2	BRG, SLV: 1 ID OILITE	475882
12	1	PLACARD, DB-3	476829
13	2	ROD END, .44-20 INTERNAL	478600
14	6	WASHER, FLT: .44	491276
15	2	PIN, COTTER: .12 X .75	491347
16	2	PIN, TEARDROP: 1 X 2.62	781437
17	2	MOUNT, LATCH	782870
18	1	INSTRUCTIONS, SWING ARM LATCH INSTALLATION	800434
19	1	MANUAL, ANCHORMATIC 3	931589-M
20	1	MANUAL, PARTS	931589-P

800434 INSTRUCTIONS NOT SHOWN
 931589-M MANUAL, ANCHORMATIC 3 NOT SHOWN
 931589-P MANUAL, PARTS NOT SHOWN

NOTE: MAY ENCOUNTER EITHER OLD AIR LOCK OR NEW AIR LOCK, OLD AIR LOCK SHOWN HERE DEPENDS ON WHICH VERSION OF 782870 782870 REV 1 SHOWN THIS VIEW SEE SHEET 2 FOR NEW AIR LOCK



SIDE VIEW WITH WORKHEAD SHOWN FOR CLARITY

REV	EN	DESCRIPTION	DATE	DRN
1	01353	NEW RELEASE	03-25	DJW
2	01480	DEL 478307(2), 465853(2), ADD 468957(2), 473376(2), MODIFY 325835 PER REV 2	04-25	KPB
3	02126	ADD 721146(1) 931589-M(1) 931589-P(1) NOTE AND SHEET 2 PER 2 DIFFERENT AIR LOCK DESIGNS	4-26	KPB

DIMENSION TOLERANCES UNLESS OTHERWISE SPECIFIED

LINEAR	.XX=±.03	.XXX=±.010	KERF ALLOW.
ANGULAR	X°=±1°	X.X°=±.5°	

SURFACE FINISH 125/√ SMOOTH ALL SHARP EDGES NOT TO EXCEED CLEAN ALL WELDS

THIS PRINT AND ALL INFORMATION WITHIN BELONGS TO RACINE RAILROAD PRODUCTS

RACINE RAILROAD PRODUCTS
 RACINE, WISCONSIN USA

DESCRIPTION
 KIT, SWING ARM LATCH

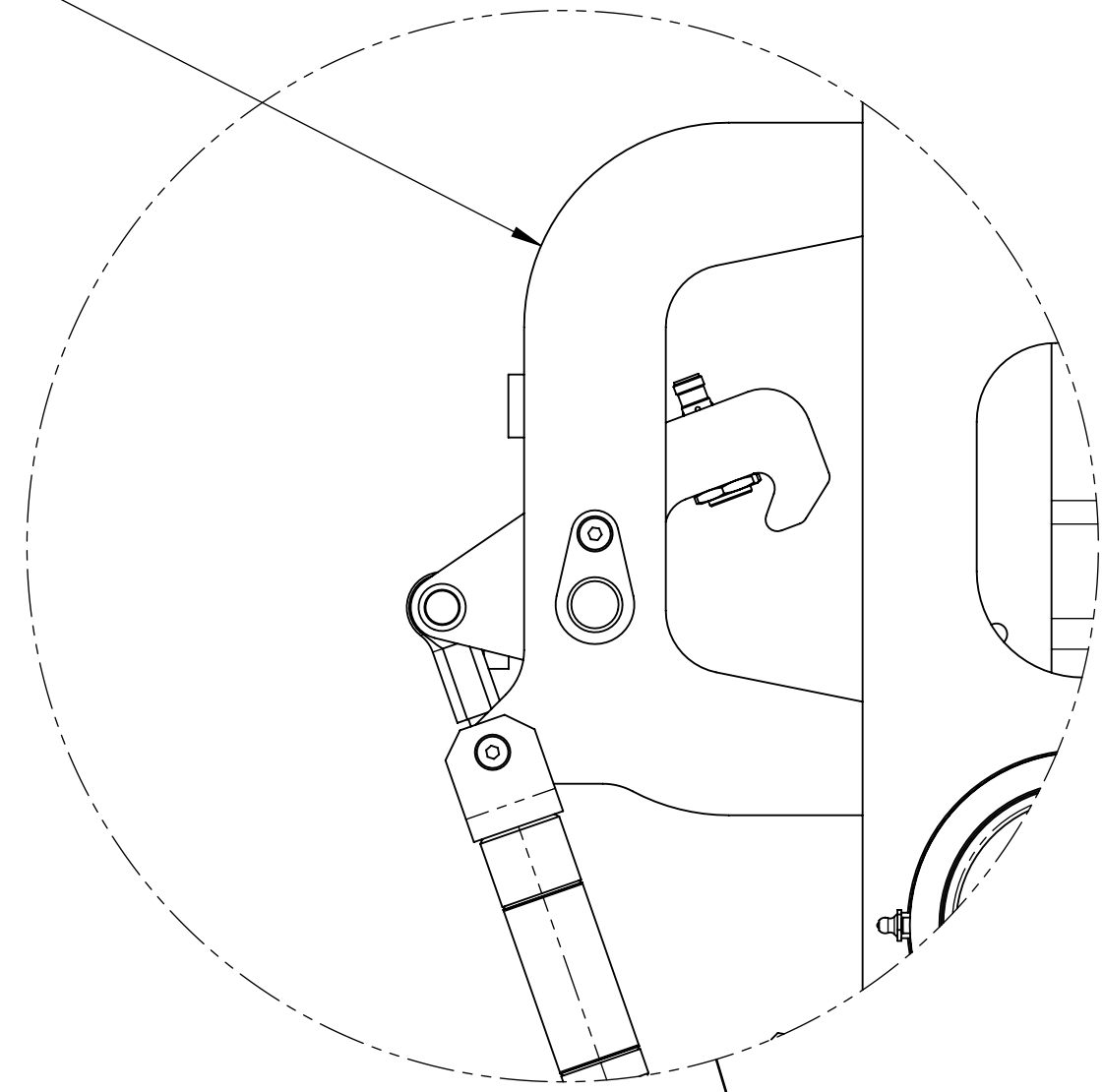
MATERIAL TYPE
 SEE BOM

USED ON	SCALE	DATE
931589	1:3	03-04-25

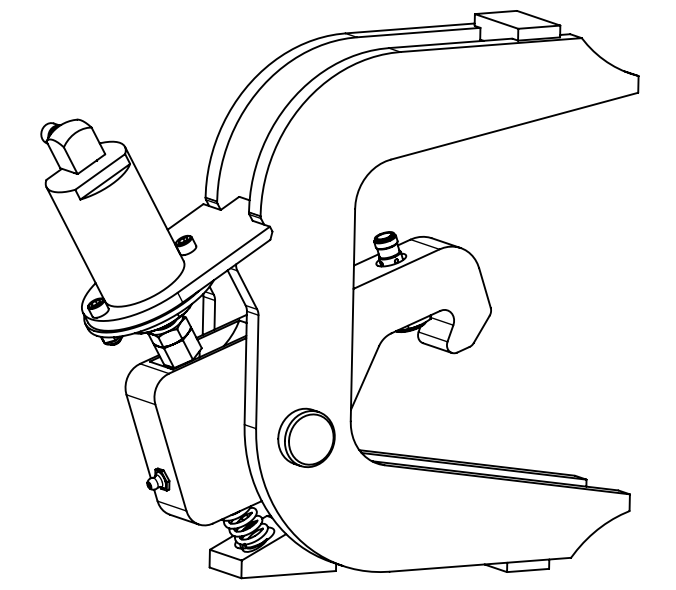
DRN	WEIGHT (LBS)	JOB NO	SHEET
DW	44.81	RD190002	1 OF 2

DWG SIZE	CATALOG	DWG NO
C	K	793223

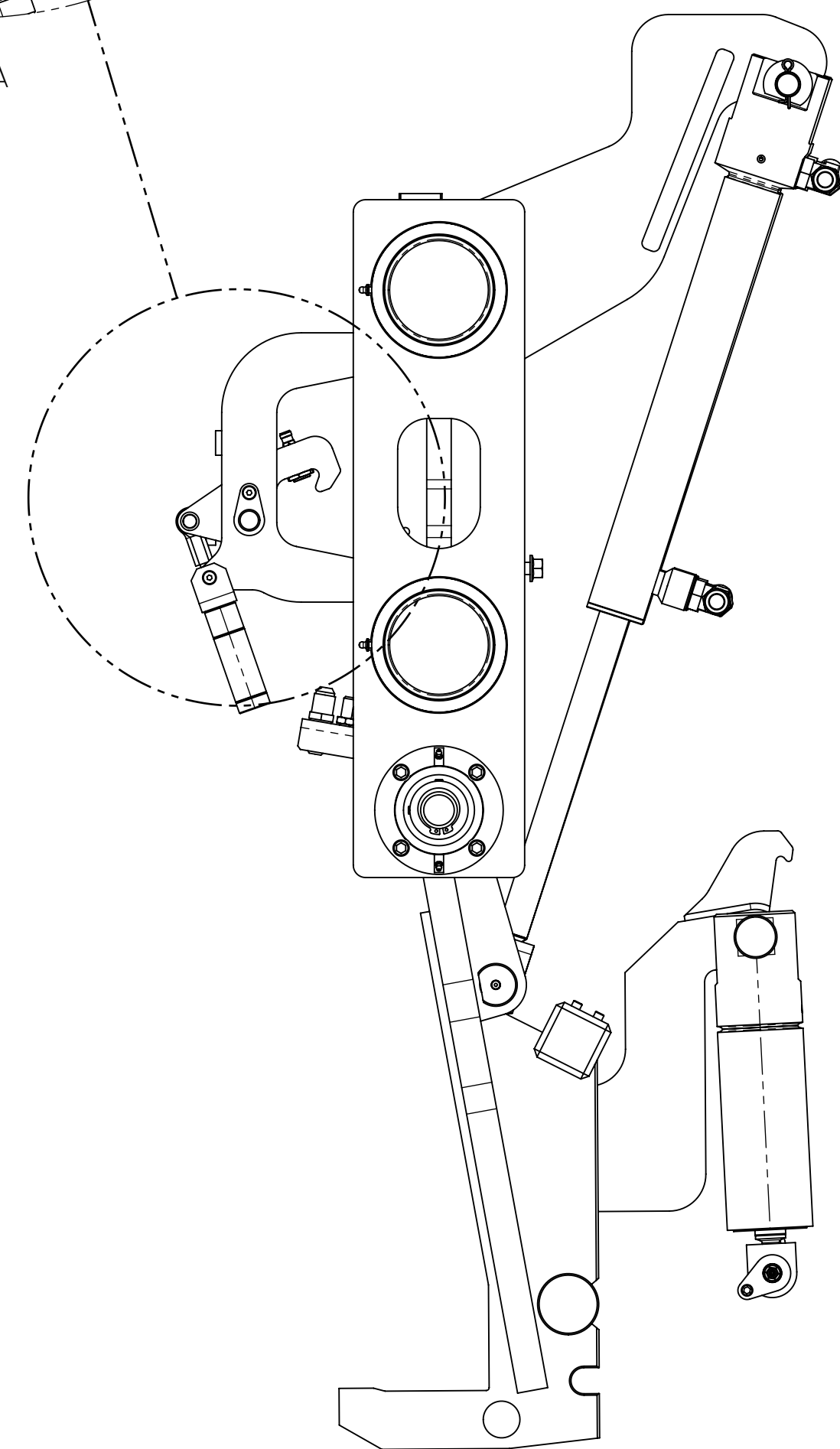
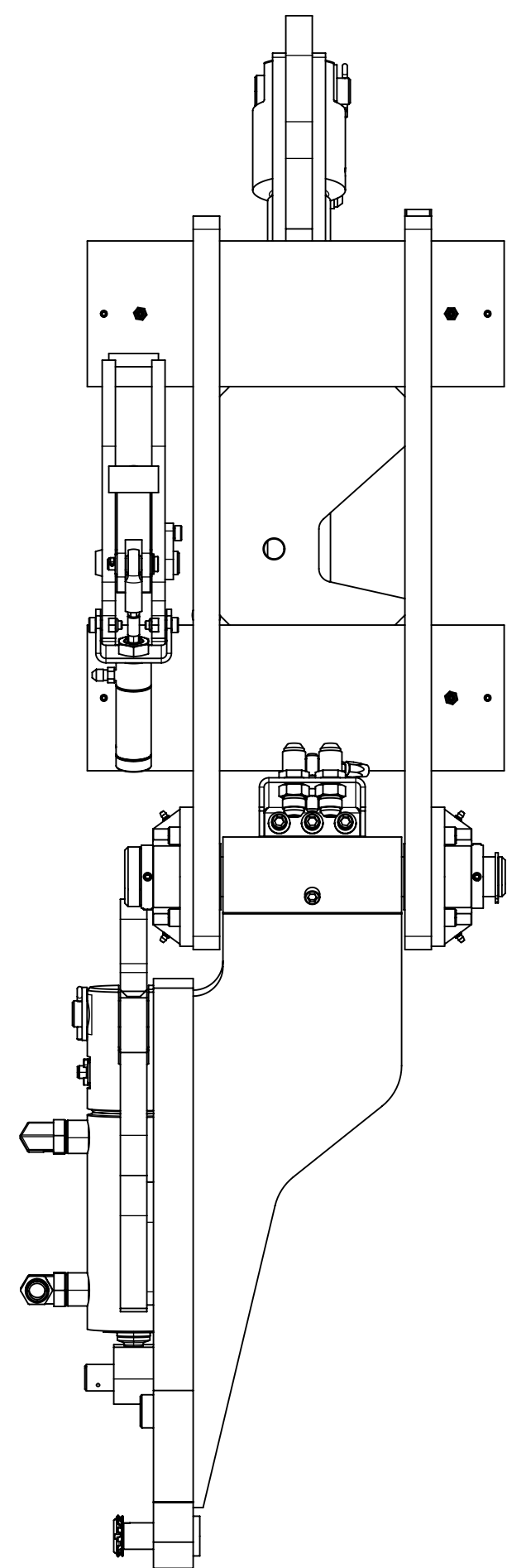
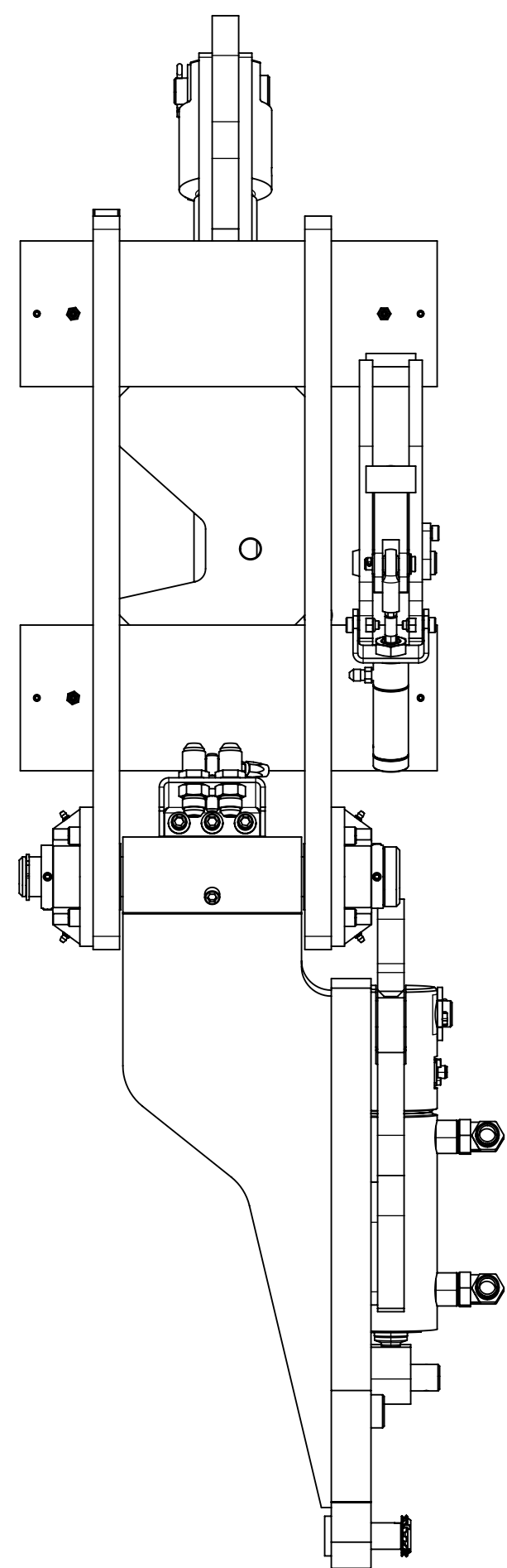
3 (782870 MOUNT, LATCH REV (1))



DETAIL A



3 EWV (2) AIR LOCK
DESIGN REFERENCE



REV	EN	DESCRIPTION	DATE	DRN
1	01353	NEW RELEASE	03-25	DJW
2	01480	DEL 478307(2), 465853(2), ADD 468957(2), 473376(2), MODIFY 325835 PER REV 2	04-25	KPB
3	02126	ADD 721146(1) 931589-M(1) 931589-P(1) NOTE AND SHEET 2 PER 2 DIFFERENT AIR LOCK DESIGNS	4-26	KPB

DIMENSION TOLERANCES UNLESS OTHERWISE SPECIFIED			
LINEAR	.XX=±.03	.XXX=±.010	KERF ALLOW.
ANGULAR	X°=±1°	X.X°=±.5°	
SURFACE FINISH	125/√	SMOOTH ALL SHARP EDGES NOT TO EXCEED CLEAN ALL WELDS	

THIS PRINT AND ALL INFORMATION WITHIN BELONGS TO RACINE RAILROAD PRODUCTS

RACINE RAILROAD PRODUCTS
RACINE, WISCONSIN USA

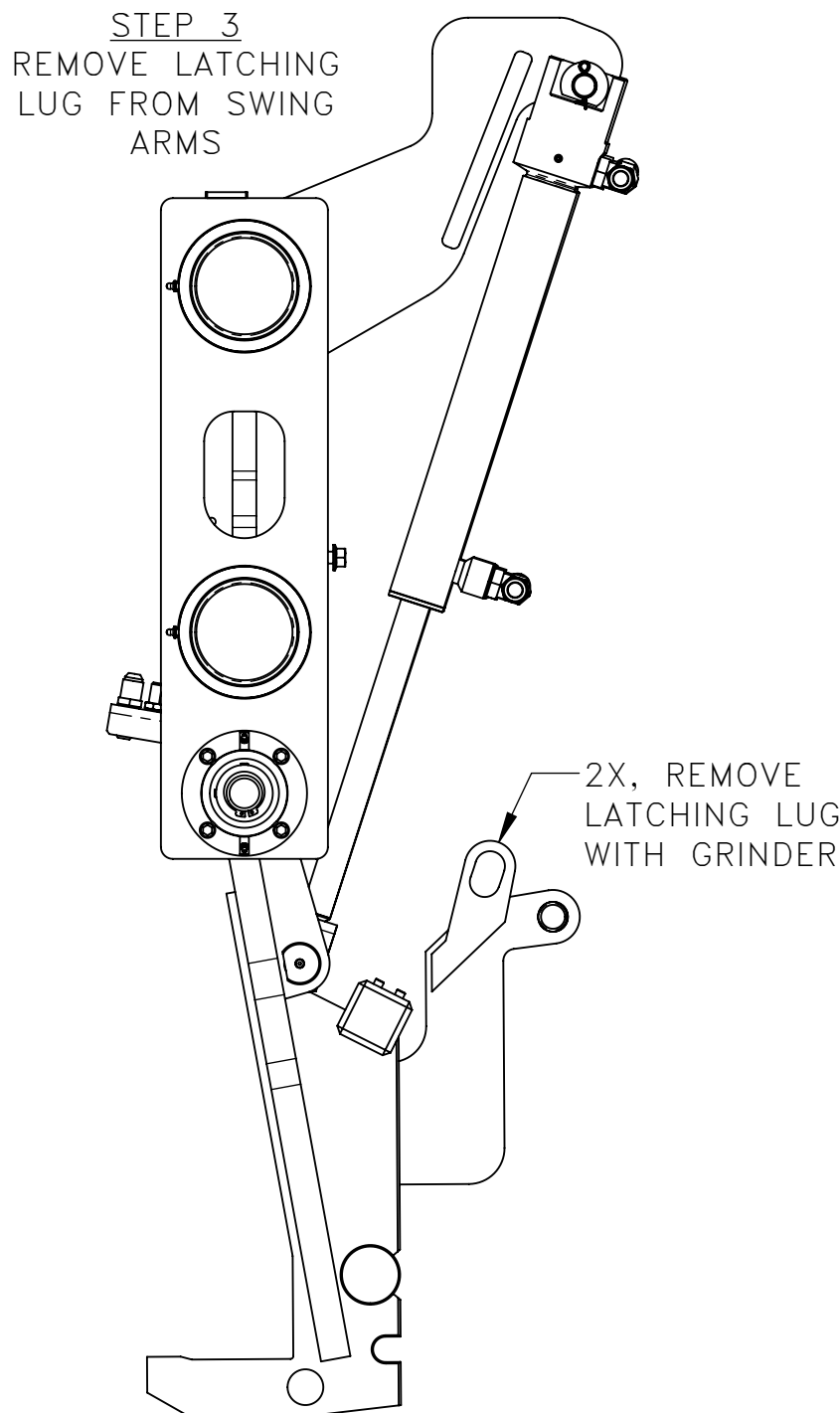
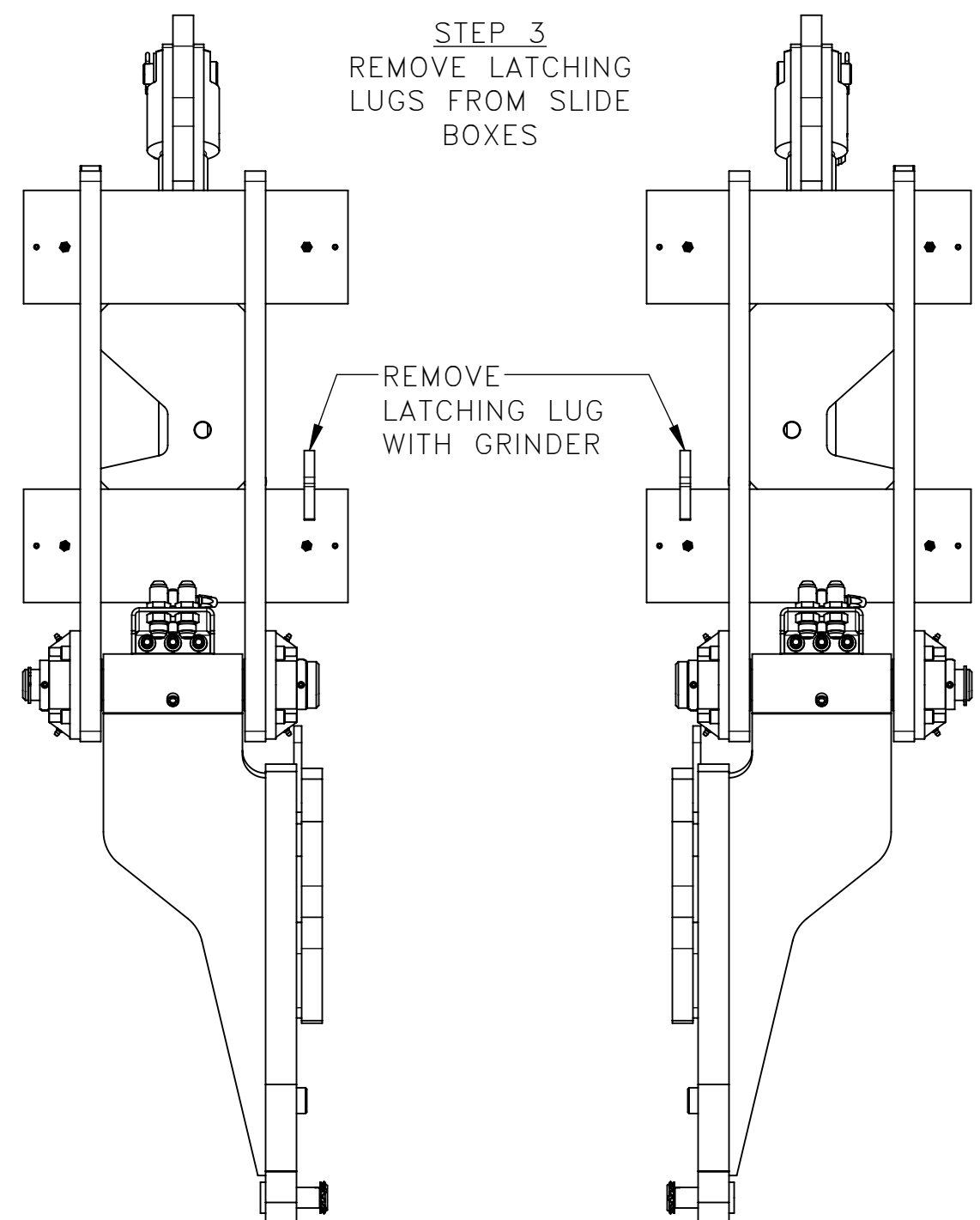
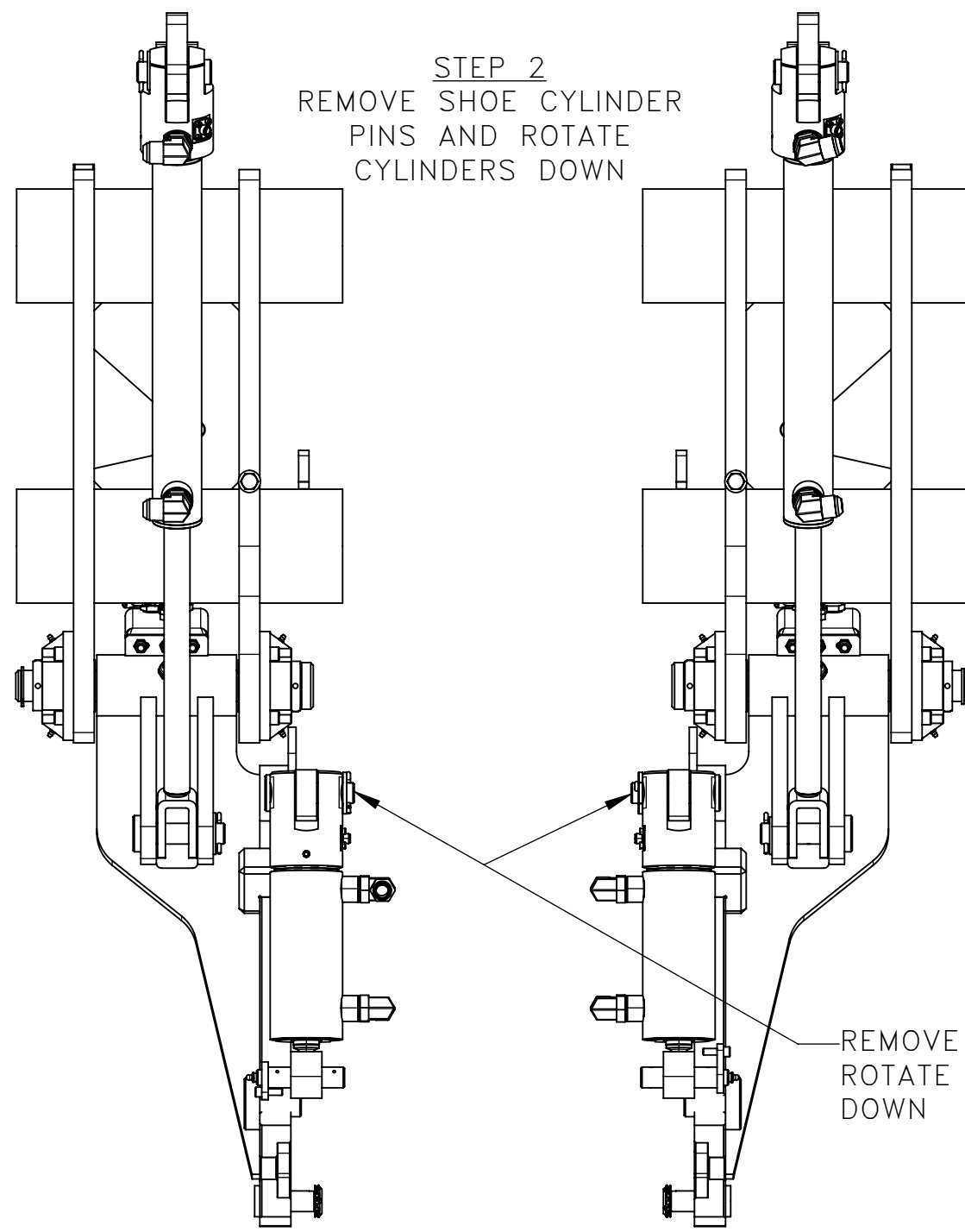
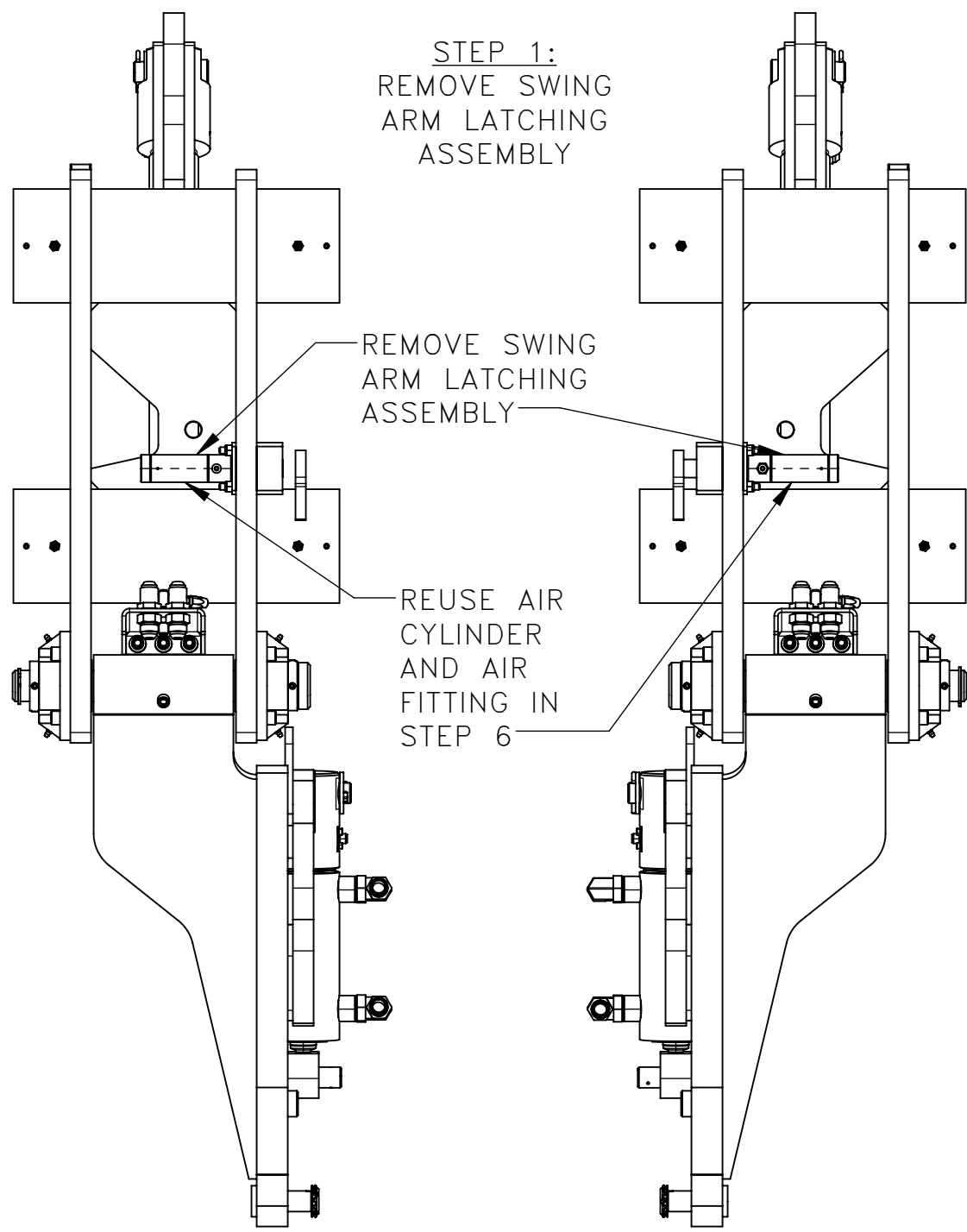
DESCRIPTION
KIT, SWING ARM LATCH

MATERIAL TYPE
SEE BOM

USED ON	SCALE	DATE
931589	1:3	03-04-25

DRN	WEIGHT (LBS)	JOB NO	SHEET
DW	44.81	RD190002	2 OF 2

DWG SIZE	CATALOG	DWG NO
C	K	793223



NO.	QTY	DESCRIPTION	PART NO.
1	REF	LATCH, APPLY ARM	325834
2	REF	LATCH	325835
3	REF	SHEET, CYLINDER MOUNT	325836
4	REF	PIN, CLEVIS: .44 X 1.75	382798
5	REF	SCR, SOC SHLD: .38 X .5	408851
6	REF	NUT, HEX ES: .31-18	450578
7	REF	SCR, SOC SHLD: .38 X .38	453853
8	REF	CABLE, MICRO: 5 PIN(M) 90° X 5 PIN(F) 5 M	468957
9	REF	SENSOR, PROXIMITY	473376
10	REF	PLACARD, DB-2	474439
11	REF	BRG, SLV: 1 ID OILITE	475882
12	REF	PLACARD, DB-3	476829
13	REF	ROD END, .44-20 INTERNAL	478600
14	REF	WASHER, FLT: .44	491276
15	REF	PIN, COTTER: .12 X .75	491347
16	REF	PIN, TEARDROP: 1 X 2.62	781437
17	REF	MOUNT, LATCH	782870
18	REF	MANUAL, ANCHORMATIC 3	931589-M
19	REF	MANUAL, PARTS	931589-P

REV	EN	DESCRIPTION	DATE	DRN
1	01353	NEW RELEASE	3-25	DJW
2	01480	DEL 478307(REF) 465853(REF), ADD 468958(REF) 473376(REF)	03-25	MAE
3	02126	ADD 931589-M (REF) 931589-P (REF), SHT 4 SWING ARM SENSOR WIRING	4-26	KPB

DIMENSION TOLERANCES UNLESS OTHERWISE SPECIFIED			
LINEAR	.XX±.03	.XXX±.010	KERF ALLOW.
ANGULAR	X°±1°	X.X°±.5°	

SURFACE FINISH 125/√ SMOOTH ALL SHARP EDGES NOT TO EXCEED CLEAN ALL WELDS

THIS PRINT AND ALL INFORMATION WITHIN BELONGS TO RACINE RAILROAD PRODUCTS

RACINE RAILROAD PRODUCTS
RACINE, WISCONSIN USA

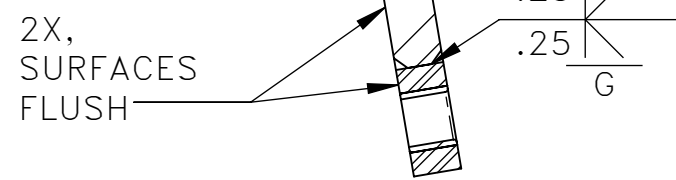
DESCRIPTION
KIT, SWING ARM LATCH

MATERIAL TYPE
SEE BOM

USED ON	SCALE	DATE
931589	1:8	03-05-25

DRN	WEIGHT (LBS)	JOB NO	SHEET
DW	773.81	RD190002	1 OF 4

DWG SIZE	CATALOG	DWG NO
C	K	800434

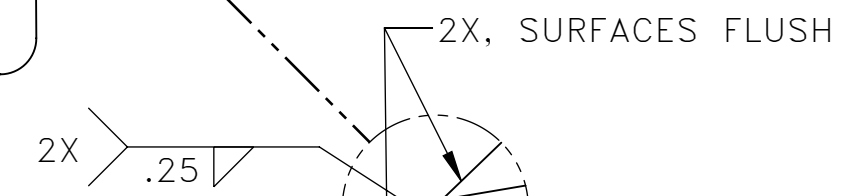
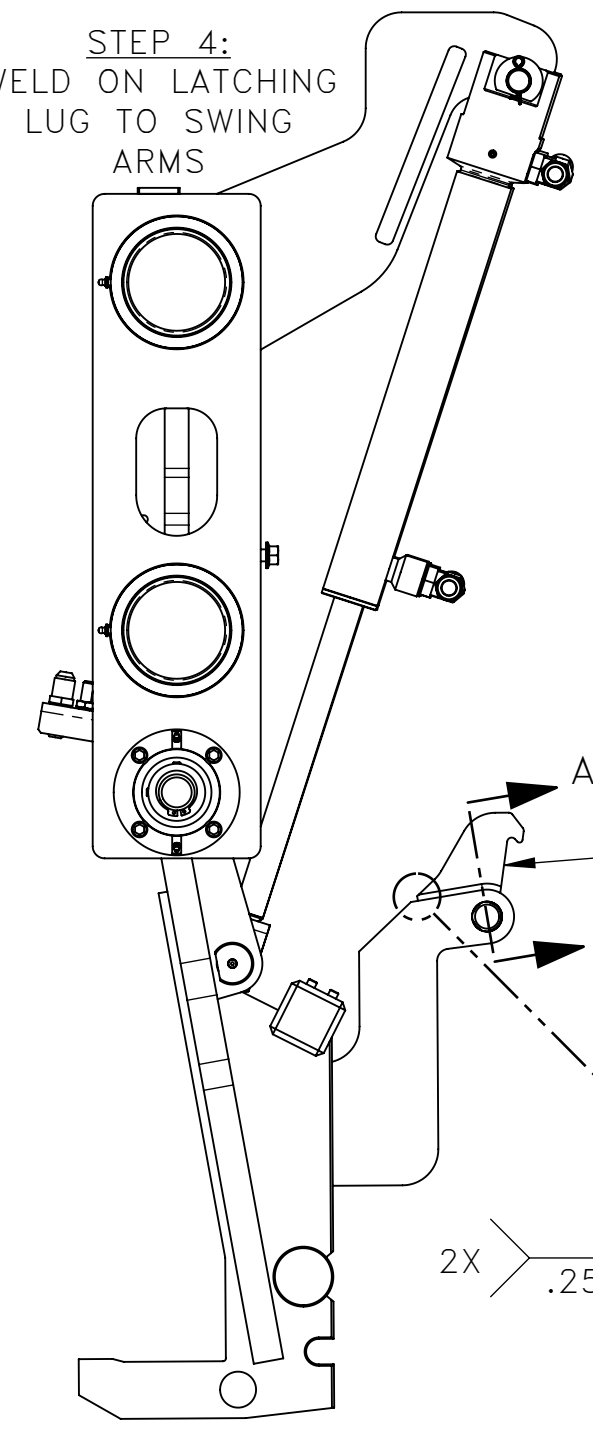


STEP 4:
WELD ON LATCHING
LUG TO SWING
ARMS

NOTE** SWING ARMS ARE
HARDENED. PRE-HEAT TO 400°F
BEFORE WELDING

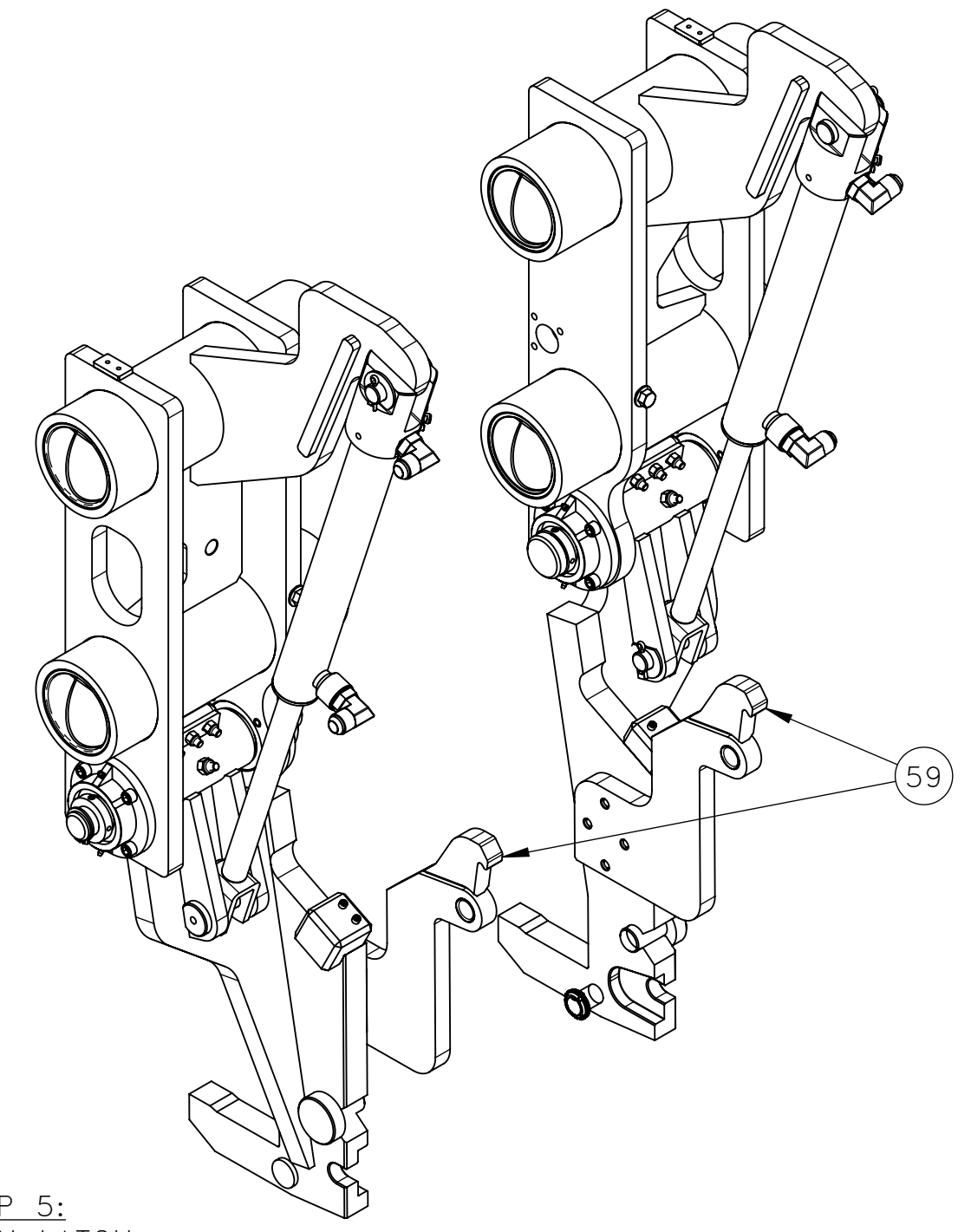
SECTION A-A
SCALE 1 : 4

STEP 4:
WELD ON LATCHING
LUG TO SWING
ARMS

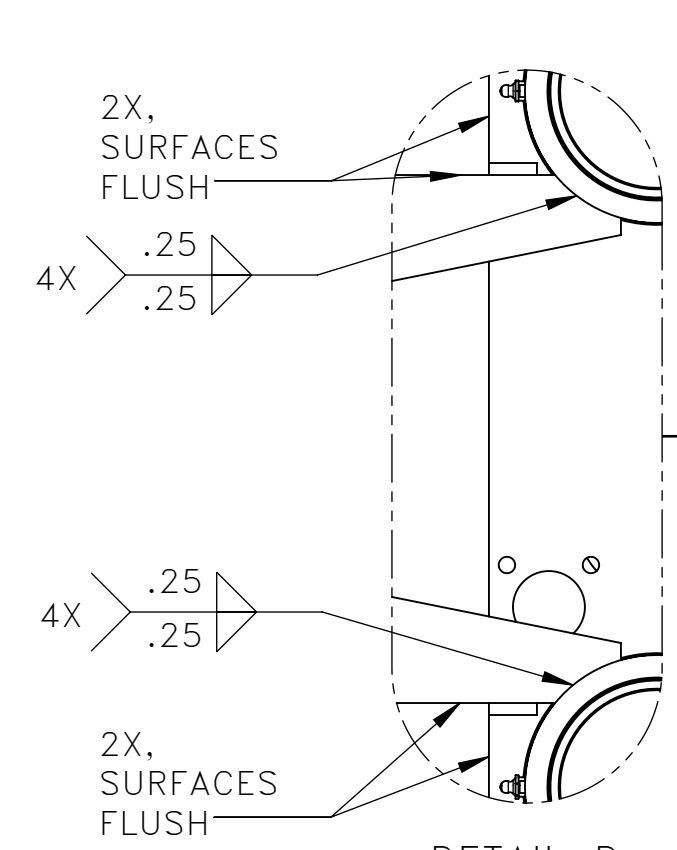
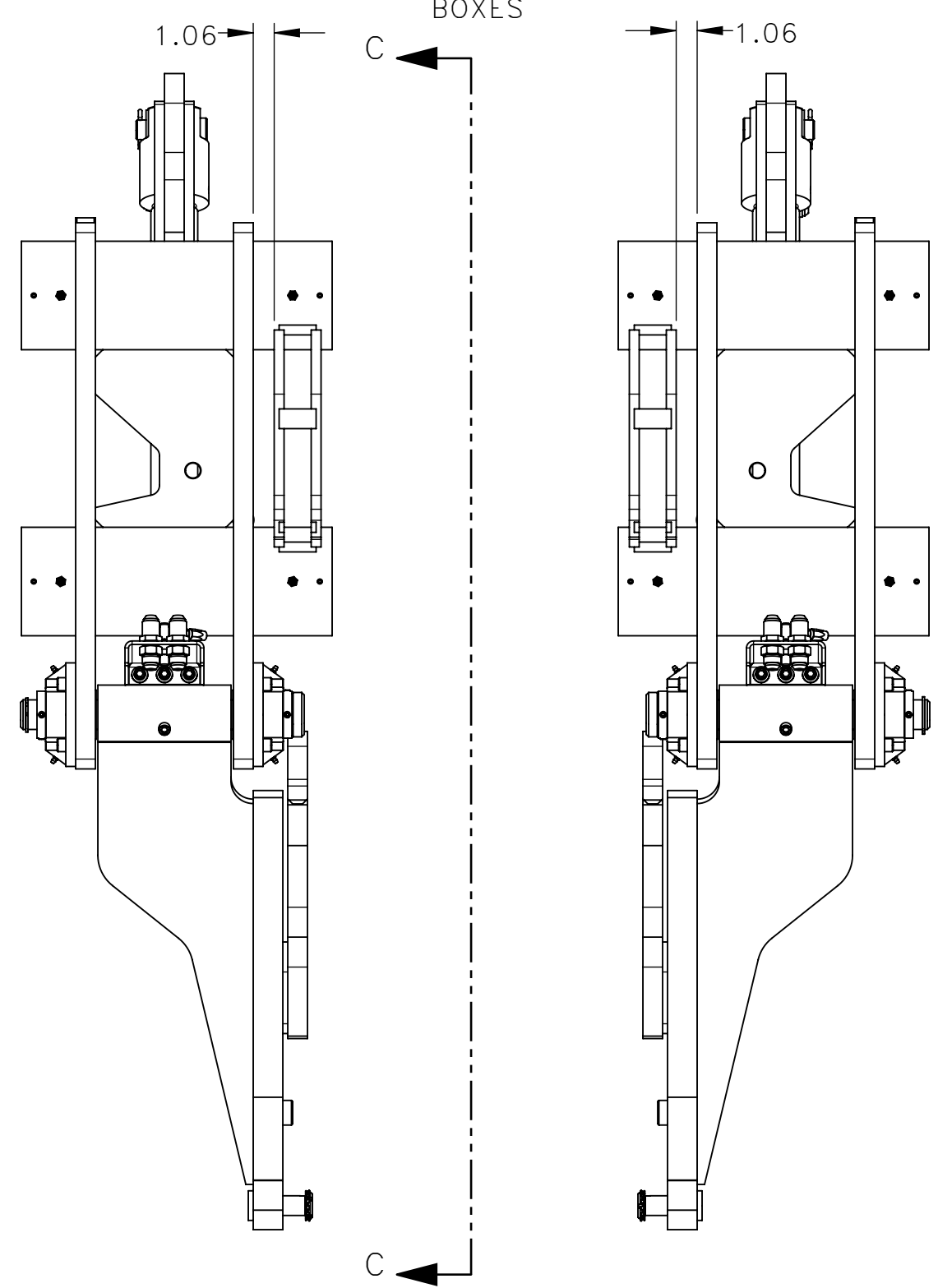


DETAIL B
SCALE 1 : 2

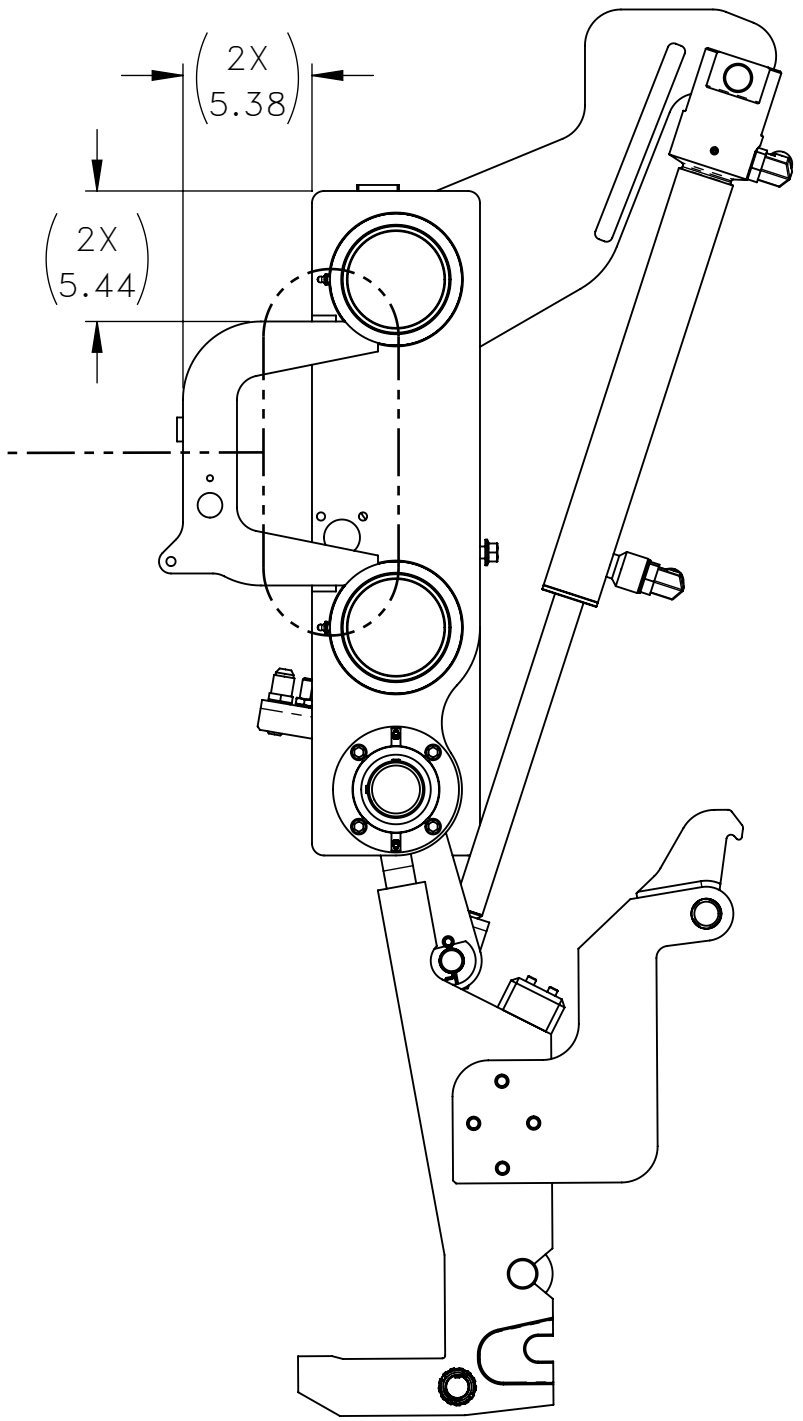
STEP 5:
WELD ON LATCH
MOUNT TO SLIDE
BOXES



STEP 5:
WELD ON LATCH
MOUNT TO SLIDE
BOXES



DETAIL D
SCALE 1 : 4



SECTION C-C

REV	EN	DESCRIPTION	DATE	DRN
1	01353	NEW RELEASE	3-25	DJW
2	01480	DEL 478307(REF) 465853(REF), ADD 468958(REF) 473376(REF)	03-25	MAE
3	02126	ADD 931589-M (REF) 931589-P (REF), SHT 4 SWING ARM SENSOR WIRING	4-26	KPB

DIMENSION TOLERANCES UNLESS OTHERWISE SPECIFIED			
LINEAR	.XX=±.03	.XXX=±.010	KERF ALLOW.
ANGULAR	X°=±1°	X.X°=±.5°	
SURFACE FINISH NOT TO EXCEED		125/√	SMOOTH ALL SHARP EDGES CLEAN ALL WELDS

THIS PRINT AND ALL INFORMATION WITHIN BELONGS TO RACINE RAILROAD PRODUCTS

RACINE RAILROAD PRODUCTS
RACINE, WISCONSIN USA

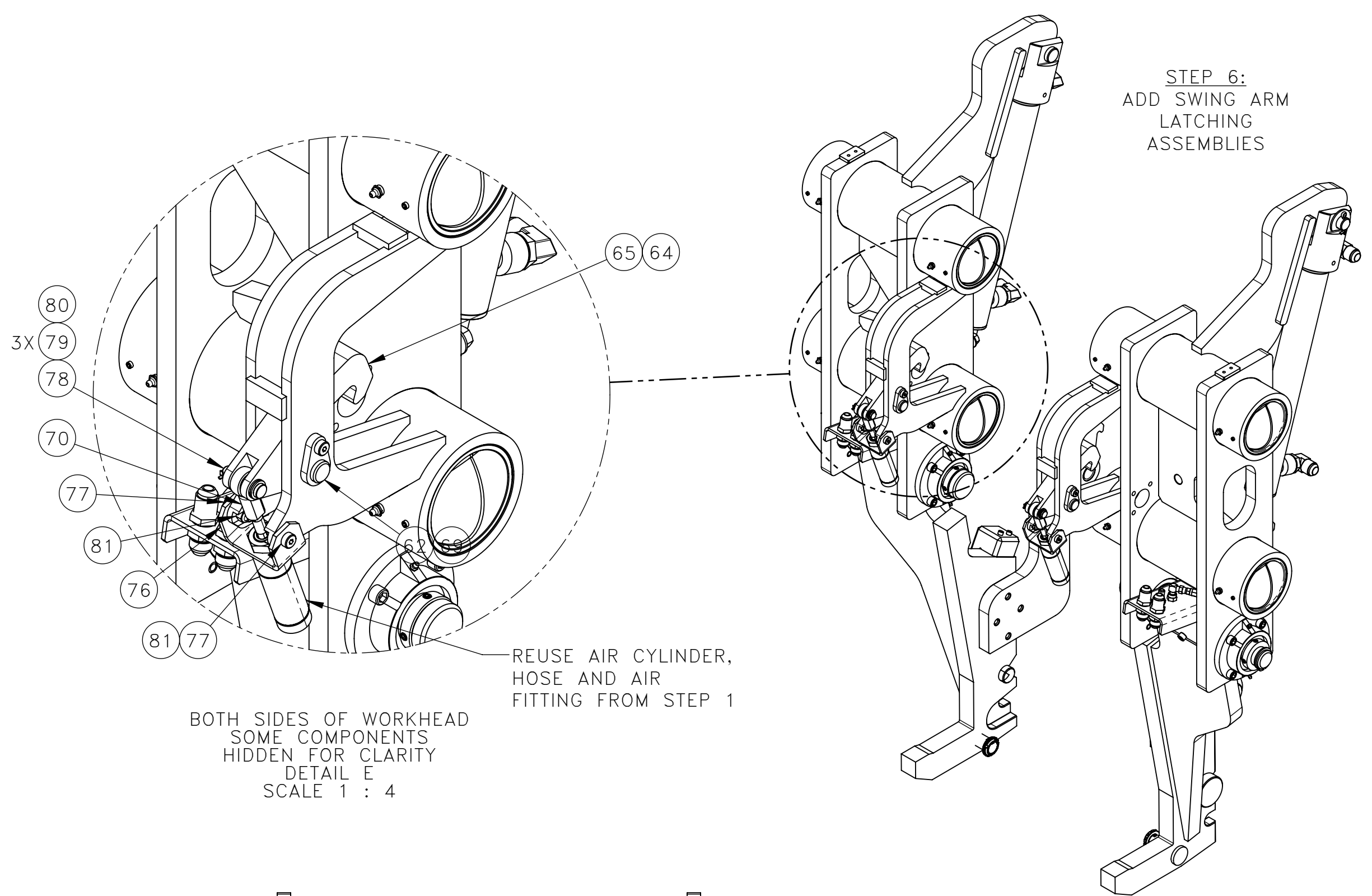
DESCRIPTION
KIT, SWING ARM LATCH

MATERIAL TYPE
SEE BOM

USED ON	SCALE	DATE
931589	1:8	03-05-25

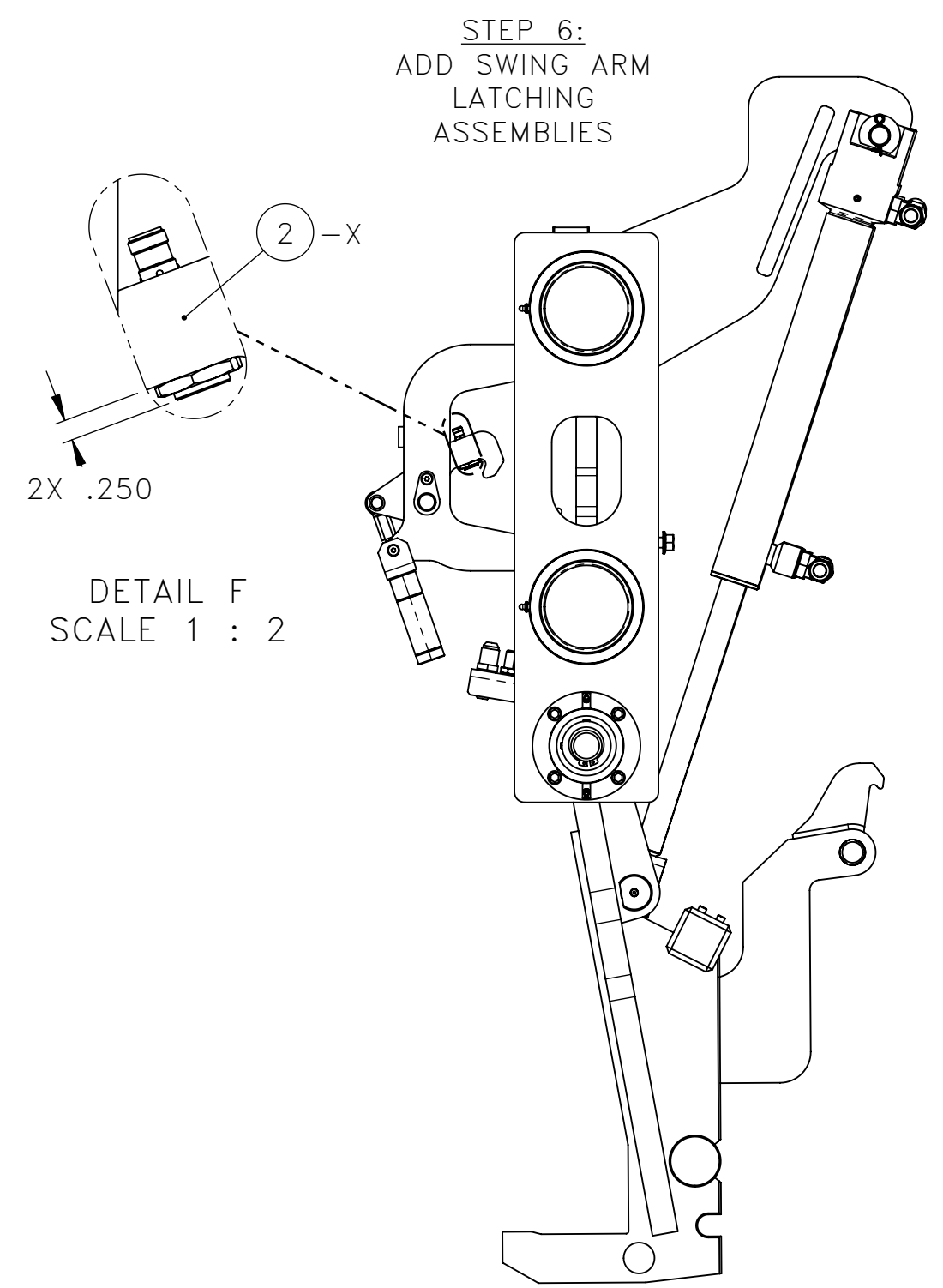
DRN	WEIGHT (LBS)	JOB NO	SHEET
DW	773.81	RD190002	2 OF 4

DWG SIZE	CATALOG	DWG NO
C	K	800434

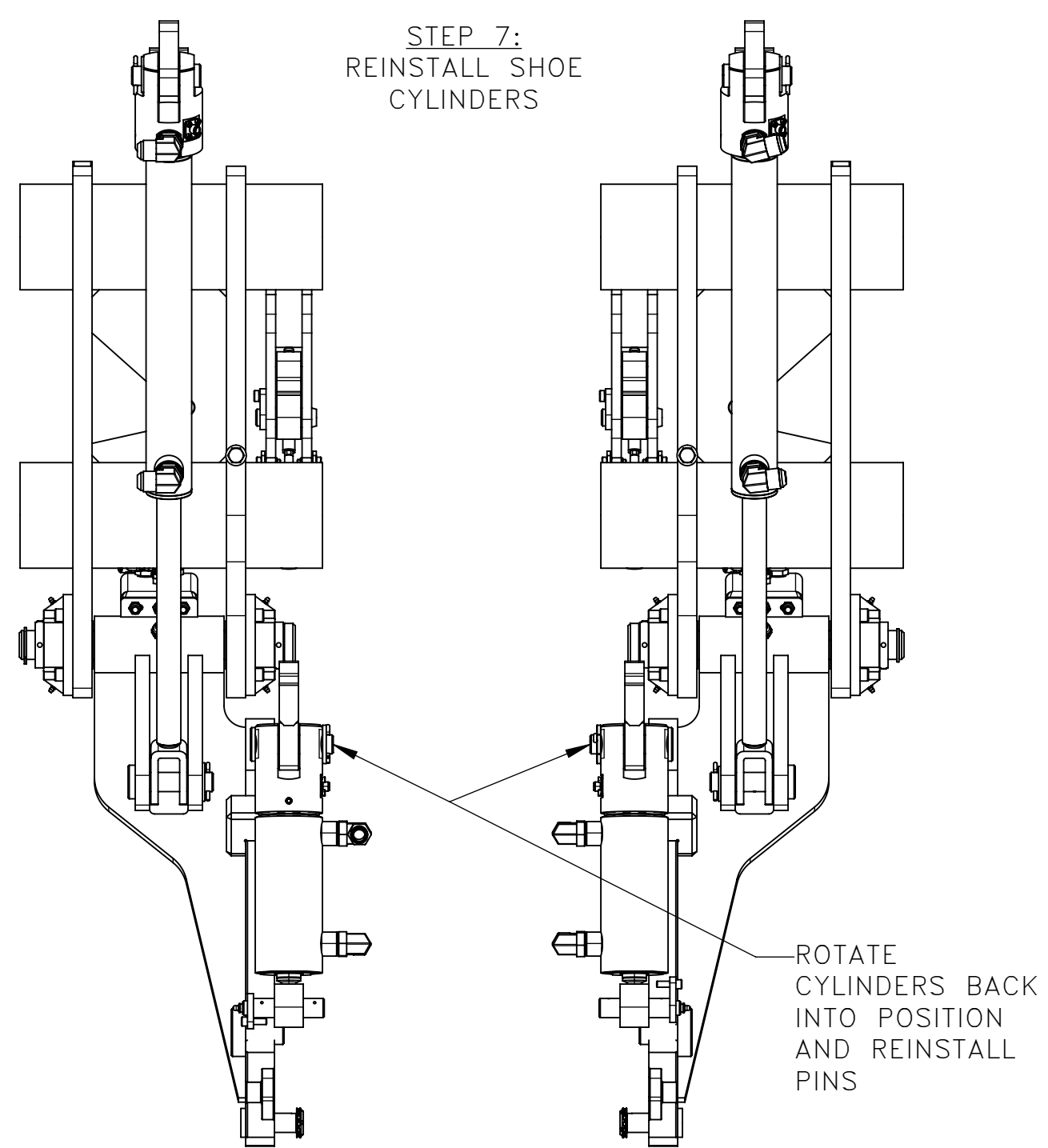


BOTH SIDES OF WORKHEAD
SOME COMPONENTS
HIDDEN FOR CLARITY
DETAIL E
SCALE 1 : 4

STEP 6:
ADD SWING ARM
LATCHING
ASSEMBLIES



DETAIL F
SCALE 1 : 2



STEP 7:
REINSTALL SHOE
CYLINDERS

ROTATE
CYLINDERS BACK
INTO POSITION
AND REINSTALL
PINS

REV	EN	DESCRIPTION	DATE	DRN
1	01353	NEW RELEASE	3-25	DJW
2	01480	DEL 478307(REF) 465853(REF), ADD 468958(REF) 473376(REF)	03-25	MAE
3	02126	ADD 931589-M (REF) 931589-P (REF), SHT 4 SWING ARM SENSOR WIRING	4-26	KPB

DIMENSION TOLERANCES UNLESS OTHERWISE SPECIFIED			
LINEAR	.XX=±.03	.XXX=±.010	KERF ALLOW.
ANGULAR	X°=±1°	X.X°=±.5°	
SURFACE FINISH NOT TO EXCEED	125/√	SMOOTH ALL SHARP EDGES CLEAN ALL WELDS	

THIS PRINT AND ALL INFORMATION WITHIN BELONGS TO RACINE RAILROAD PRODUCTS

RACINE RAILROAD PRODUCTS
RACINE, WISCONSIN USA

DESCRIPTION
KIT, SWING ARM LATCH

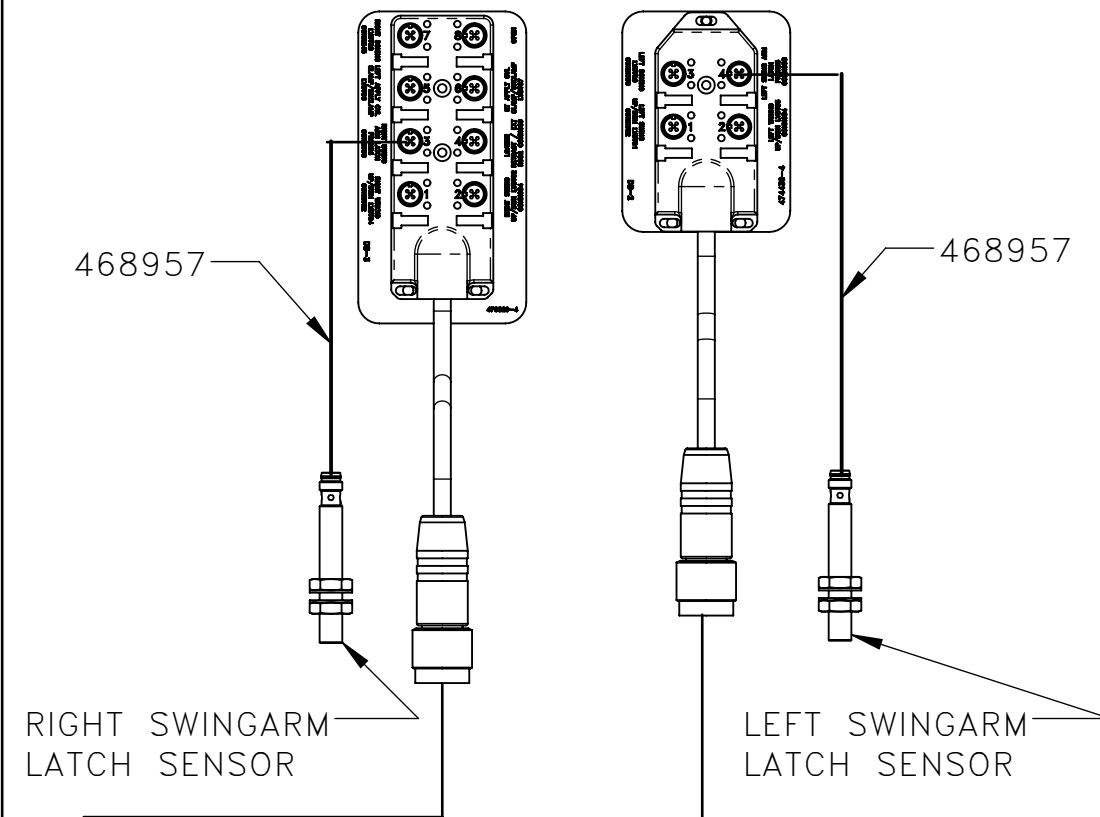
MATERIAL TYPE
SEE BOM

USED ON	SCALE	DATE
931589	1:8	03-05-25

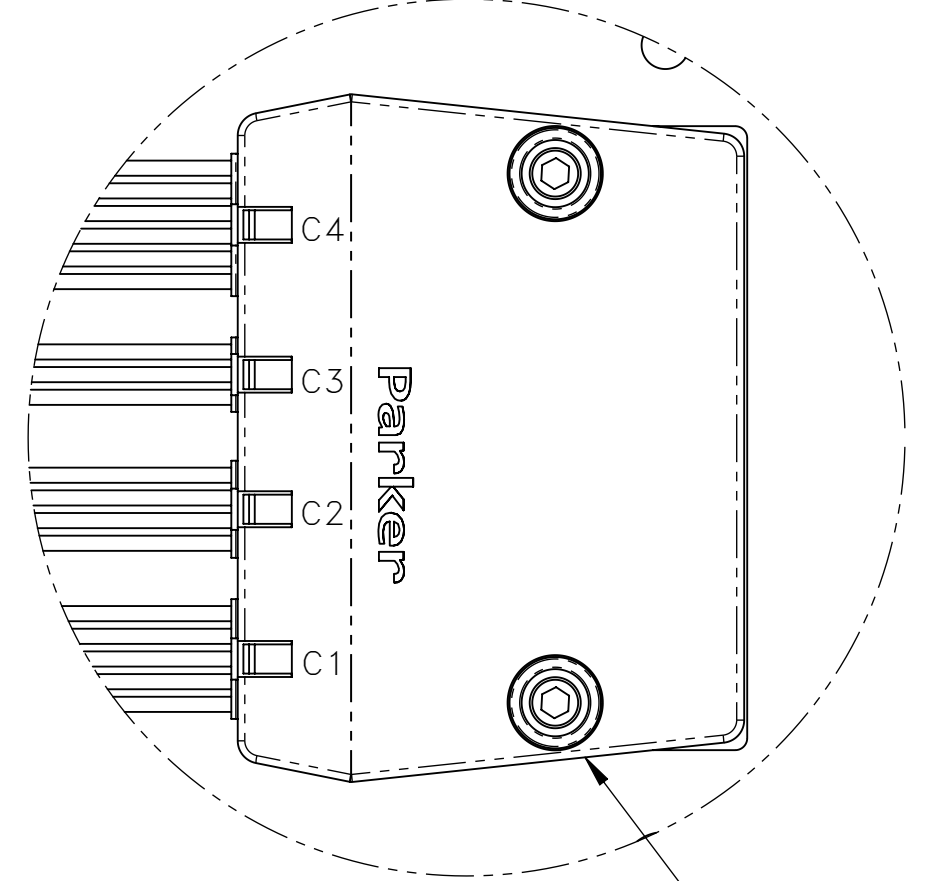
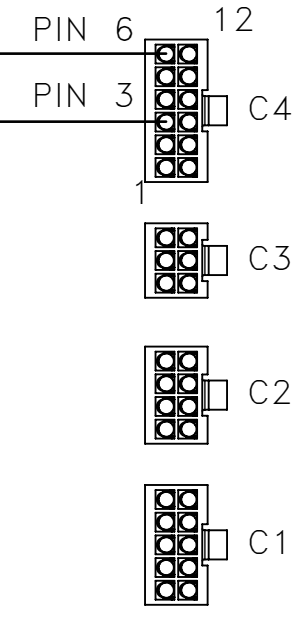
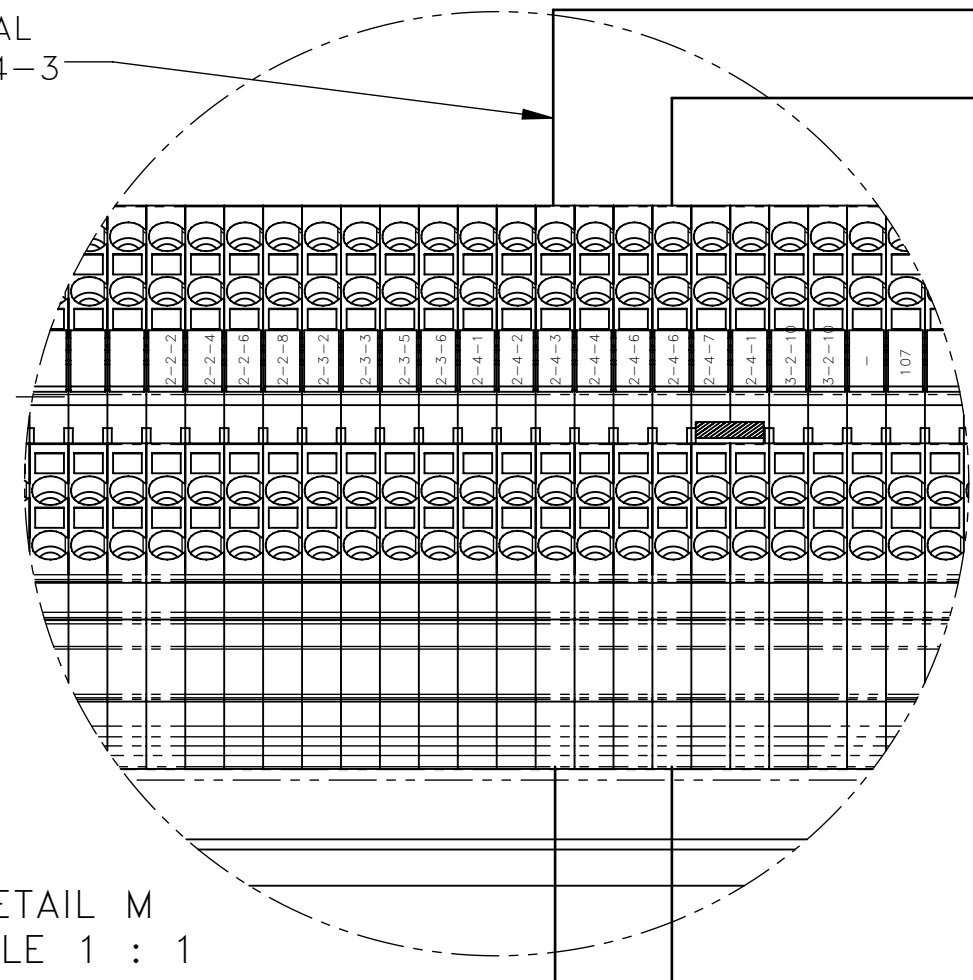
DRN	WEIGHT (LBS)	JOB NO	SHEET
DW	773.81	RD190002	3 OF 4

DWG SIZE	CATALOG	DWG NO
C	K	800434

STEP 8
 REPLACE DB-2
 AND DB-3 PLACARD
 WITH 474439-4 AND 476829-4
 CONNECT HARNESS 465853
 TO SENSOR



TO TERMINAL
 BLOCK 2-4-3



3 DETAIL M
 SCALE 1 : 1

3 DETAIL J
 SCALE 1 : 1

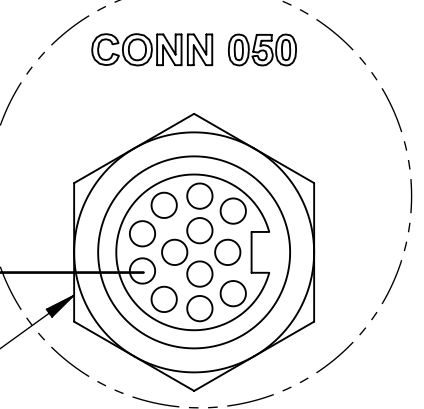
(471154 MODULE, XC21)

RIGHT SWINGARM
 LATCH SENSOR

LEFT SWINGARM
 LATCH SENSOR

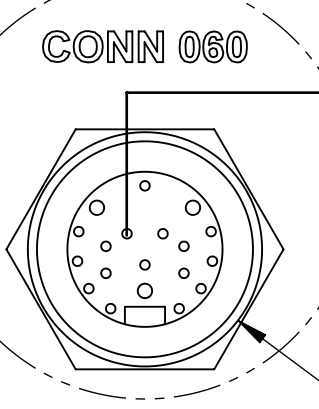
PIN 4 CONN 050 RED/BLK
 16 GA TO TERMINAL
 BLOCK 2-4-3

(468953 CONN, SOCKET: 12 PIN)



3 DETAIL K
 SCALE 1 : 1

STEP 9
 WIRE CIRCUITS
 IN 719180 BOX, ENGINE CONTROL
 FOR RIGHT AND LEFT
 SWINGARM LATCH SENSORS

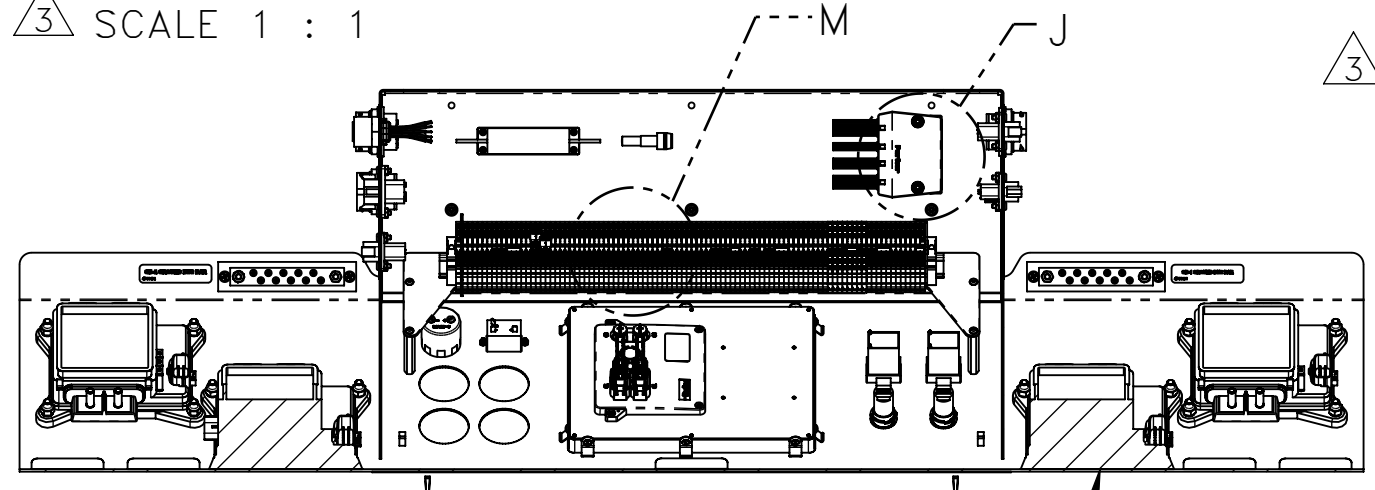


PIN 16 CONN 060 YELLOW 22 GA
 TO TERMINAL BLOCK 2-4-6

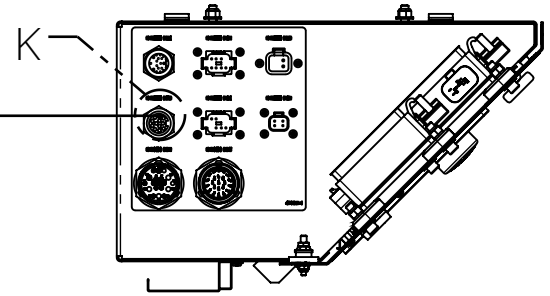
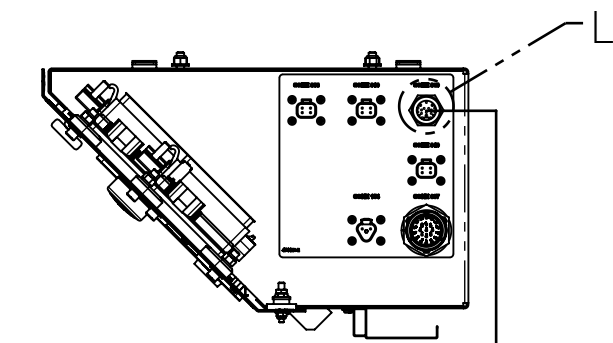
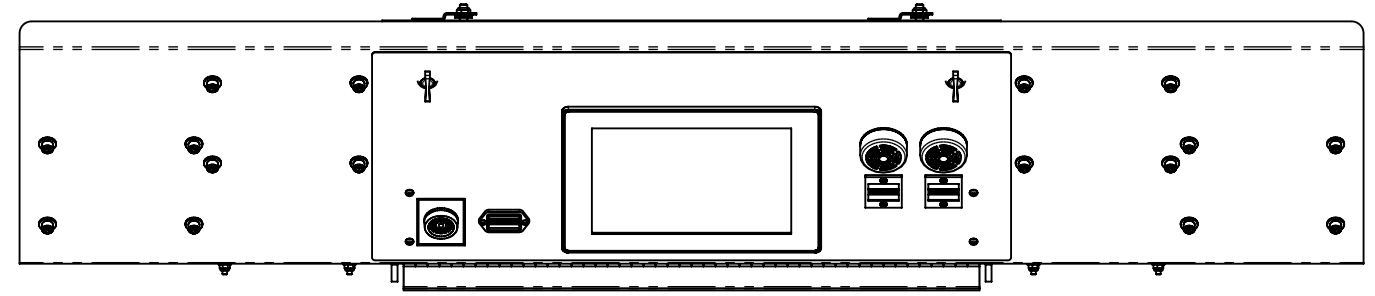
(468953 CONN, SOCKET: 19 PIN)

3 DETAIL L
 SCALE 1 : 1

STEP 10
 INSTALL LATEST OPERATING
 PROGRAM. OBTAIN FROM
 RACINE RAILROAD PRODUCTS



TOP VIEW INSIDE
 ENGINE CONTROL BOX
 (719180 BOX, ENGINE CONTROL)



REV	EN	DESCRIPTION	DATE	DRN
1	01353	NEW RELEASE	3-25	DJW
2	01480	DEL 478307(REF) 465853(REF), ADD 468958(REF) 473376(REF)	03-25	MAE
3	02126	ADD 931589-M (REF) 931589-P (REF), SHT 4 SWING ARM SENSOR WIRING	4-26	KPB

DIMENSION TOLERANCES UNLESS OTHERWISE SPECIFIED			
LINEAR	.XX=±.03	.XXX=±.010	KERF ALLOW.
ANGULAR	X°=±1°	X.X°=±.5°	
SURFACE FINISH NOT TO EXCEED		125/√	SMOOTH ALL SHARP EDGES CLEAN ALL WELDS

THIS PRINT AND ALL INFORMATION WITHIN BELONGS TO RACINE RAILROAD PRODUCTS

RACINE RAILROAD PRODUCTS
 RACINE, WISCONSIN USA

DESCRIPTION
 KIT, SWING ARM LATCH

MATERIAL TYPE
 SEE BOM

USED ON
 931589

SCALE
 1:8

DATE
 03-05-25

DRN
 DW

WEIGHT (LBS)
 773.81

JOB NO
 RD190002

SHEET
 4 OF 4

DWG SIZE
 C

CATALOG
 K

DWG NO
 800434